

Recombinant Human BNIPL Protein, Myc/DDK-tagged, C13 and N15-labeled

Cat. No. BNIPL-3057H **Lot. No.** (See product label)

SPECIFICATION

Product Overview

BNIPL MS Standard C13 and N15-labeled recombinant protein (NP_612122) with a C-terminal MYC/DDK tag, was expressed in HEK293 cells.

Species

Human

Source

HEK293

Description

The protein encoded by this gene interacts with several other proteins, such as BCL2, ARHGAP1, MIF and GFER. It may function as a bridge molecule between BCL2 and ARHGAP1/CDC42 in promoting cell death. Alternatively spliced transcript variants encoding different isoforms have been described for this gene.

Molecular Mass

39.7 kDa

AA Sequence

MGTIQEAGKKTDVGVREIAEAPELGAALRHGELELKEEWQDEEFPRLLPEEAGTSE
 DPEDPKGDSQAAAGTPSTLALCGQRPMPKRLSAPELRLSLTKGPGNDGASPTQSA
 PSSPDGSSDLEIDELETPSDSEQLDSGHEFEWEDELPRAEGLGTSETAERLGRGCM
 WDVTGEDGHHWRVFRMGPREQRVDMTVIEPYKKVLSHGGYHGDGLNAVILFASCY
 LPRSSIPNYTYVMEHLFRYVMVGTLELLVAENYLLVHLSGGTSRAQVPPLSWIRQCYR
 TLDRLRKNLRLV VVHATWYVKAFLLRPFISKFTRKIRFLDSL GELAQQLISLDQV
 HIPEAVRQLDRDLHGSGGTTTRTRPLEQKLISEEDLAANDILDYKDDDDKV

Purity

> 80% as determined by SDS-PAGE and Coomassie blue staining

 Tel: 1-631-559-9269 1-516-512-3133

 Email: info@creative-biomart.com  Fax: 1-631-938-8127

 45-1 Ramsey Road, Shirley, NY 11967, USA

Stability	Stable for 3 months from receipt of products under proper storage and handling conditions.
Storage	Store at -80 centigrade. Avoid repeated freeze-thaw cycles.
Concentration	50 µg/mL as determined by BCA
Storage Buffer	100 mM glycine, 25 mM Tris-HCl, pH 7.3.

GENE INFORMATION

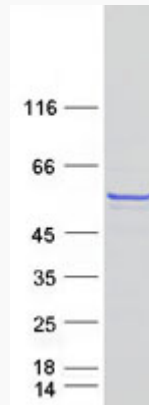
Gene Name	BNIPL BCL2/adenovirus E1B 19kD interacting protein like [Homo sapiens (human)]
Official Symbol	BNIPL
Synonyms	BNIPL; BCL2/adenovirus E1B 19kD interacting protein like; bcl-2/adenovirus E1B 19 kDa-interacting protein 2-like protein; BNIPI 1; BNIPL 2; PP753; BNIP-2 similar; BNIP-S; BNIPL-1; BNIPL-2;
Gene ID	149428
mRNA Refseq	NM_138278
Protein Refseq	NP_612122
MIM	611275
UniProt ID	Q7Z465

 Tel: 1-631-559-9269 1-516-512-3133

 Email: info@creative-biomart.com  Fax: 1-631-938-8127

 45-1 Ramsey Road, Shirley, NY 11967, USA

SDS-PAGE



 Tel: 1-631-559-9269 1-516-512-3133

 Email: info@creative-biomart.com  Fax: 1-631-938-8127

 45-1 Ramsey Road, Shirley, NY 11967, USA