

Recombinant Human BOD1 Protein, GST-tagged

Cat. No. BOD1-3762H Lot. No. (See product label)

SPECIFICATION

Product Overview	Human FAM44B full-length ORF (NP_612378.1, 1 a.a. - 185 a.a.) recombinant protein with GST-tag at N-terminal.
Species	Human
Source	Wheat Germ
Description	BOD1 (Biorientation Of Chromosomes In Cell Division 1) is a Protein Coding gene. Diseases associated with BOD1 include Myoma. An important paralog of this gene is BOD1L2.
Molecular Mass	45.6 kDa
AA Sequence	MADGGGGGGTGAVGGGGTSQASAGAATGATGASGGGGPINPASLPPGDPQLIALI VEQLKSRGLFDSFRRDCLADVDTKPAYQNLKQVDNFVSTHLDKQEWNPMTMNKNQ LRNGLRQSVVQSGMLEAGVDRIISQVVDPKLNHIFRPQIERAIHEFLAAQKKA AV PAP PPEPEGQDPPAPSQDTS
Applications	Enzyme-linked Immunoabsorbent Assay Western Blot (Recombinant protein) Antibody Production Protein Array
Notes	Best use within three months from the date of receipt of this protein.

 Tel: 1-631-559-9269 1-516-512-3133

 Email: info@creative-biomart.com  Fax: 1-631-938-8127

 45-1 Ramsey Road, Shirley, NY 11967, USA

Storage Store at -80 centigrade. Aliquot to avoid repeated freezing and thawing.

Storage Buffer 50 mM Tris-HCl, 10 mM reduced Glutathione, pH=8.0 in the elution buffer.

GENE INFORMATION

Gene Name BOD1 biorientation of chromosomes in cell division 1 [Homo sapiens (human)]

Official Symbol BOD1

Synonyms

BOD1; biorientation of chromosomes in cell division 1; Biorientation Of Chromosomes In Cell Division 1; Family With Sequence Similarity 44, Member B; Biorientation Defective 1; FAM44B; Biorientation Of Chromosomes In Cell Division Protein 1; Biorientation Defective Protein 1; Protein FAM44B; biorientation of chromosomes in cell division protein 1; biorientation defective 1; family with sequence similarity 44, member B

Gene ID 91272

mRNA Refseq NM_001159651

Protein Refseq NP_001153123

MIM 616745

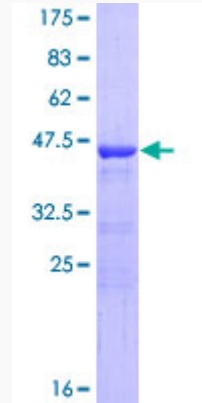
UniProt ID Q96IK1

 Tel: 1-631-559-9269 1-516-512-3133

 Email: info@creative-biomart.com  Fax: 1-631-938-8127

 45-1 Ramsey Road, Shirley, NY 11967, USA

**Quality Control
Testing**



12.5% SDS-PAGE Stained with Coomassie Blue.

 Tel: 1-631-559-9269 1-516-512-3133

 Email: info@creative-biomart.com  Fax: 1-631-938-8127

 45-1 Ramsey Road, Shirley, NY 11967, USA