

Recombinant Human BOLA1 Protein (1-137 aa), His-tagged

Cat. No. BOLA1-1343H Lot. No. (See product label)

SPECIFICATION

| | |
|-------------------------|-------------------------------------------------------------------------------------------------------------------------------------------------------------------------------------------------------------|
| Product Overview | Recombinant Human BOLA1 Protein (1-137 aa) is produced by Yeast expression system. This protein is fused with a 6xHis tag at the N-terminal. Research Area: Cell Biology. Protein Description: Full Length. |
| Species | Human |
| Source | Yeast |
| ProteinLength | 1-137 aa |
| Form | Tris-based buffer,50% glycerol |
| Molecular Mass | 16.3 kDa |
| AA Sequence | MLSGRLVLGLVSMAGRVCLCQGSAGSGAIGPVEAAIRTKLEEALSPEVLELRNESGG HAVPPGSETHFRVAVVSSRFEGLSPLQRHRLVHAALAEELGGPVHALAIQARTPAQ WRENSQLDTSPPCLGGNKKTLGTP |
| Purity | > 90% as determined by SDS-PAGE. |
| Notes | Repeated freezing and thawing is not recommended. Store working aliquots at 4 centigrade for up to one week. |
| Storage | The shelf life is related to many factors, storage state, buffer ingredients, storage temperature and the stability of the protein itself. Generally, the shelf life of liquid form |

 Tel: 1-631-559-9269 1-516-512-3133

 Email: info@creative-biomart.com  Fax: 1-631-938-8127

 45-1 Ramsey Road, Shirley, NY 11967, USA

is 6 months at -20 centigrade/-80 centigrade. The shelf life of lyophilized form is 12 months at -20 centigrade/-80 centigrade.

Concentration

A hardcopy of COA with reconstitution instruction is sent along with the products. Please refer to it for detailed information.

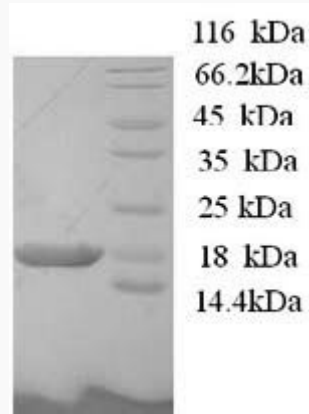
GENE INFORMATION

| | |
|------------------------|-----------------------------------------------------------|
| Gene Name | BOLA1 bolA homolog 1 (E. coli) [Homo sapiens] |
| Official Symbol | BOLA1 |
| Synonyms | BOLA1; CGI 143; hBoIA; CGI-143; MGC75015; RP11-196G18.18; |
| Gene ID | 51027 |
| mRNA Refseq | NM_016074 |
| Protein Refseq | NP_057158 |
| MIM | 613181 |
| UniProt ID | Q9Y3E2 |

 Tel: 1-631-559-9269 1-516-512-3133

 Email: info@creative-biomart.com  Fax: 1-631-938-8127

 45-1 Ramsey Road, Shirley, NY 11967, USA



(Tris-Glycine gel) Discontinuous SDS-PAGE (reduced) with 5% enrichment gel and 15% separation gel.

 Tel: 1-631-559-9269 1-516-512-3133

 Email: info@creative-biomart.com  Fax: 1-631-938-8127

 45-1 Ramsey Road, Shirley, NY 11967, USA