

Recombinant Human BOLA1 Protein, Myc/DDK-tagged, C13 and N15-labeled

Cat. No. BOLA1-3067H Lot. No. (See product label)

SPECIFICATION

Product Overview	BOLA1 MS Standard C13 and N15-labeled recombinant protein (NP_057158) with a C-terminal MYC/DDK tag, was expressed in HEK293 cells.
Species	Human
Source	HEK293
Description	Acts as a mitochondrial iron-sulfur (Fe-S) cluster assembly factor that facilitates (Fe-S) cluster insertion into a subset of mitochondrial proteins. Probably acts together with the monothiol glutaredoxin GLRX5. May protect cells against oxidative stress.
Molecular Mass	14.1 kDa
AA Sequence	MLSGRLVLGLVSMAGRVCLCQGSAGSGAIGPVEAAIRTKLEEALSPEVLELRNESGG HAVPPGSETHFRVAVVSSRFEGLSPLQRHRLVHAALAEELGGPVHALAIQARTPAQ WRENSQLDTSPPCLGGNKKTLGTPTRTRPLEQKLISEEDLAANDILDYKDDDDKV
Purity	> 80% as determined by SDS-PAGE and Coomassie blue staining
Stability	Stable for 3 months from receipt of products under proper storage and handling conditions.
Storage	Store at -80 centigrade. Avoid repeated freeze-thaw cycles.

 Tel: 1-631-559-9269 1-516-512-3133

 Email: info@creative-biomart.com  Fax: 1-631-938-8127

 45-1 Ramsey Road, Shirley, NY 11967, USA

Concentration 50 µg/mL as determined by BCA

Storage Buffer 100 mM glycine, 25 mM Tris-HCl, pH 7.3.

GENE INFORMATION

Gene Name BOLA1 bolA family member 1 [Homo sapiens (human)]

Official Symbol BOLA1

Synonyms BOLA1; bolA homolog 1 (E. coli); bolA like 1 (E. coli); bolA-like protein 1; CGI 143; bolA-like 1; hBoIA; CGI-143; MGC75015; RP11-196G18.18;

Gene ID 51027

mRNA Refseq NM_016074

Protein Refseq NP_057158

MIM 613181

UniProt ID Q9Y3E2

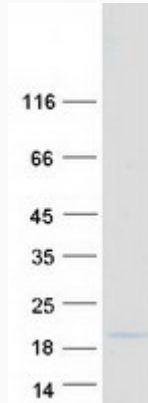
 Tel: 1-631-559-9269 1-516-512-3133

 Email: info@creative-biomart.com  Fax: 1-631-938-8127

 45-1 Ramsey Road, Shirley, NY 11967, USA



SDS-PAGE



Tel: 1-631-559-9269 1-516-512-3133

Email: info@creative-biomart.com Fax: 1-631-938-8127

45-1 Ramsey Road, Shirley, NY 11967, USA