

## Recombinant Human BORA Protein, GST-tagged

Cat. No. BORA-4277H Lot. No. (See product label)

### SPECIFICATION

<b>Product Overview</b>	Human FLJ22624 full-length ORF ( AAH56876, 1 a.a. - 551 a.a.) recombinant protein with GST-tag at N-terminal.
<b>Species</b>	Human
<b>Source</b>	Wheat Germ
<b>Description</b>	BORA is an activator of the protein kinase Aurora A (AURKA; MIM 603072), which is required for centrosome maturation, spindle assembly, and asymmetric protein localization during mitosis (Hutterer et al., 2006 [PubMed 16890155]).[supplied by OMIM
<b>Molecular Mass</b>	86.35 kDa
<b>AA Sequence</b>	<p>           MQITPETPGRIPVLPNPFESPSDYSNLHEQTLASPSVFKSTKLPTPGKFRWSIDQLAVI            NPVEIDPEDIHRQALYLSHSRIDKDVEDKRQKAIEEFFTKDVIVPSPWTDHEGKQLSQ            CHSSKCTNINSDSPVGKKLTIHSEKSDAACQTL LSLPVDNLENILGDYFRADEFADQ            SPGNLSSSSLRRKFLDGNNGSISDSLPSASPGSPHSGVQTSLEMFYSIDLSPVKCRS            PLQTPSSGQFSSSPIQASAKKYSLSITSPSPISSTFSPIEFQIGETPLSEQRKFTVH            SPDASSGTNSNGITNPCIRSPYIDGCSPIKNWSPMRLQMYSGGTQYRTSVIQIPFTLE            TQGEDEEDKENIPSTDVSSPAMDAAGIHLRQFSNEASTHGTHLVVTAMSVTQNQSS            ASEKELALLQDVEREKDNNTVDMVDPIEIADETTWIKPVDNGSLPMTDFVSGIAFSI            ENSHMCMSPLAESSVIPCESSNIQMDSGYNTQNCGSNIMDTVGAESYCKESDAQTC            EVESKSQAFNMKQDHTTQRCWMKTASPFQCSSP         </p>

 Tel: 1-631-559-9269 1-516-512-3133

 Email: [info@creative-biomart.com](mailto:info@creative-biomart.com)  Fax: 1-631-938-8127

 45-1 Ramsey Road, Shirley, NY 11967, USA

<b>Applications</b>	Enzyme-linked Immunoabsorbent Assay Western Blot (Recombinant protein) Antibody Production Protein Array
<b>Notes</b>	Best use within three months from the date of receipt of this protein.
<b>Storage</b>	Store at -80 centigrade. Aliquot to avoid repeated freezing and thawing.
<b>Storage Buffer</b>	50 mM Tris-HCl, 10 mM reduced Glutathione, pH=8.0 in the elution buffer.

## GENE INFORMATION

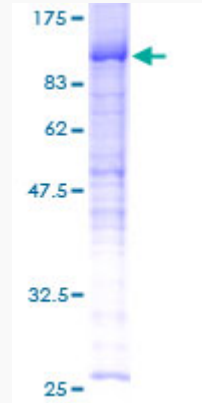
<b>Gene Name</b>	BORA bora, aurora kinase A activator [ Homo sapiens (human) ]
<b>Official Symbol</b>	BORA
<b>Synonyms</b>	BORA; bora, aurora kinase A activator; C13orf34; protein aurora borealis
<b>Gene ID</b>	79866
<b>mRNA Refseq</b>	NM_001286746
<b>Protein Refseq</b>	NP_001273675
<b>MIM</b>	610510
<b>UniProt ID</b>	Q6PGQ7

 Tel: 1-631-559-9269 1-516-512-3133

 Email: [info@creative-biomart.com](mailto:info@creative-biomart.com)  Fax: 1-631-938-8127

 45-1 Ramsey Road, Shirley, NY 11967, USA

**Quality Control  
Testing**



12.5% SDS-PAGE Stained with Coomassie Blue.

 Tel: 1-631-559-9269 1-516-512-3133

 Email: [info@creative-biomart.com](mailto:info@creative-biomart.com)  Fax: 1-631-938-8127

 45-1 Ramsey Road, Shirley, NY 11967, USA