

Recombinant Human BPHL Protein (38-291 aa), His-Myc-tagged

Cat. No. BPHL-2614H **Lot. No.** (See product label)

SPECIFICATION

Product Overview	Recombinant Human BPHL Protein (38-291 aa) is produced by Yeast expression system. This protein is fused with a 10xHis tag at the N-terminal and a Myc tag at the C-terminal. Research Area: Signal Transduction. Protein Description: Full Length of Mature Protein.
Species	Yeast
Source	Yeast
ProteinLength	38-291 aa
Form	Tris-based buffer,50% glycerol
Molecular Mass	32.8 kDa
AA Sequence	SVTSAKVAVNGVQLHYQQTGEGDHAVLLLLPGMLGSGETDFGFPQLKNLNKKLFTVVA WDPRGYGHSRPPDRDFPADFFERDAKDAVDLMKALKFKKVSLLGWSDGGITALIAA AKYPSYIHKMVIWGANAYVTDEDSMIYEGIRDVSKWSERTRKPLEALYGYDYFARTC EKWVDGIRQFKHLDPDGNICRHLLPRVQCPALIVHGEKDPLVPRFHADFIHKHKVKGSR LHLMPEGKHNLHLRFADFNKLAEDFLQ
Purity	> 90% as determined by SDS-PAGE.
Notes	Repeated freezing and thawing is not recommended. Store working aliquots at 4

 Tel: 1-631-559-9269 1-516-512-3133

 Email: info@creative-biomart.com  Fax: 1-631-938-8127

 45-1 Ramsey Road, Shirley, NY 11967, USA

centigrade for up to one week.

Storage

The shelf life is related to many factors, storage state, buffer ingredients, storage temperature and the stability of the protein itself. Generally, the shelf life of liquid form is 6 months at -20 centigrade/-80 centigrade. The shelf life of lyophilized form is 12 months at -20 centigrade/-80 centigrade.

Concentration

A hardcopy of COA will be sent along with the products. Please refer to it for detailed information.

GENE INFORMATION

Gene Name

BPHL biphenyl hydrolase-like (serine hydrolase) [Homo sapiens]

Official Symbol

BPHL

Synonyms

BPHL; MCNAA; valacyclovir hydrolase; Bph rp; valacyclovirase; BPH-RP; VACVASE; MGC41865; MGC125930;

Gene ID

670

mRNA Refseq

NM_004332

Protein Refseq

NP_004323

MIM

603156

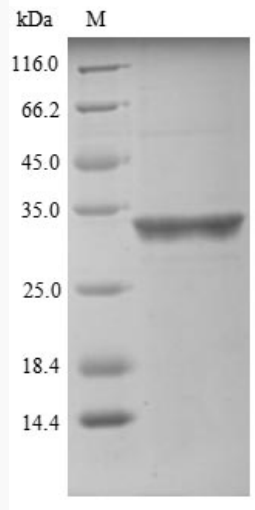
UniProt ID

Q86WA6

 Tel: 1-631-559-9269 1-516-512-3133

 Email: info@creative-biomart.com  Fax: 1-631-938-8127

 45-1 Ramsey Road, Shirley, NY 11967, USA



(Tris-Glycine gel) Discontinuous SDS-PAGE (reduced) with 5% enrichment gel and 15% separation gel.

 Tel: 1-631-559-9269 1-516-512-3133

 Email: info@creative-biomart.com  Fax: 1-631-938-8127

 45-1 Ramsey Road, Shirley, NY 11967, USA