

# Recombinant Human BPHL Protein (38-291 aa), His-Myc-tagged

**Cat. No.** BPHL-2772H    **Lot. No.** (See product label)

## SPECIFICATION

<b>Product Overview</b>	Recombinant Human BPHL Protein (38-291 aa) is produced by Baculovirus expression system. This protein is fused with a 10xHis tag at the N-terminal and a Myc tag at the C-terminal. Research Area: Signal Transduction. Protein Description: Full Length of Mature Protein.
<b>Species</b>	Human
<b>Source</b>	Insect Cells
<b>ProteinLength</b>	38-291 aa
<b>Form</b>	Tris-based buffer,50% glycerol
<b>Molecular Mass</b>	32.8 kDa
<b>AA Sequence</b>	SVTSAKVAVNGVQLHYQQTGEGDHAVLLLLPGMLGSGETDFGFPQLKNLNKKLFTVVA WDPRGYGHSRPPDRDFPADFFERDAKDAVDLMKALKFKKVSLGWSGGITALIAA AKYPSYIHKMVIWGANAYVTDEDSMIYEGIRDVSKWSERTRKPLEALYGYDYFARTC EKWVDGIRQFKHLPDGNICRHLLPRVQCPALIVHGEKDPLVPRFHADFIHKHVKGSR LHLMPEGKHNLHLRFADFNKLAEDFLQ
<b>Purity</b>	> 85% as determined by SDS-PAGE.
<b>Notes</b>	Repeated freezing and thawing is not recommended. Store working aliquots at 4

 Tel: 1-631-559-9269    1-516-512-3133

 Email: [info@creative-biomart.com](mailto:info@creative-biomart.com)     Fax: 1-631-938-8127

 45-1 Ramsey Road, Shirley, NY 11967, USA

centigrade for up to one week.

**Storage**

The shelf life is related to many factors, storage state, buffer ingredients, storage temperature and the stability of the protein itself. Generally, the shelf life of liquid form is 6 months at -20 centigrade/-80 centigrade. The shelf life of lyophilized form is 12 months at -20 centigrade/-80 centigrade.

**Concentration**

A hardcopy of COA will be sent along with the products. Please refer to it for detailed information.

## GENE INFORMATION

**Gene Name**

BPHL biphenyl hydrolase-like (serine hydrolase) [ Homo sapiens ]

**Official Symbol**

BPHL

**Synonyms**

BPHL; MCNAA; valacyclovir hydrolase; Bph rp; valacyclovirase; BPH-RP; VACVASE; MGC41865; MGC125930;

**Gene ID**

670

**mRNA Refseq**

NM\_004332

**Protein Refseq**

NP\_004323

**MIM**

603156

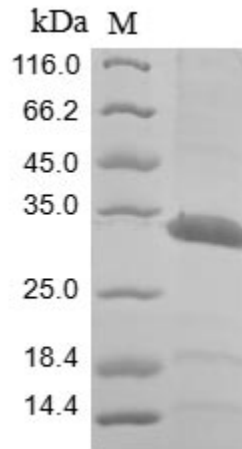
**UniProt ID**

Q86WA6

 Tel: 1-631-559-9269 1-516-512-3133

 Email: [info@creative-biomart.com](mailto:info@creative-biomart.com)  Fax: 1-631-938-8127

 45-1 Ramsey Road, Shirley, NY 11967, USA



(Tris-Glycine gel) Discontinuous SDS-PAGE (reduced) with 5% enrichment gel and 15% separation gel.

 Tel: 1-631-559-9269 1-516-512-3133

 Email: [info@creative-biomart.com](mailto:info@creative-biomart.com)  Fax: 1-631-938-8127

 45-1 Ramsey Road, Shirley, NY 11967, USA