

Recombinant Human BPIFA1 protein

Cat. No. BPIFA1-1727H Lot. No. (See product label)

SPECIFICATION

Product Overview	Recombinant Human BPIFA1 protein(Q9NP55-1)(Gln20-Val256) was expressed in E.coli.
Species	Human
ProteinLength	Gln20-Val256
Tag	N/A
Form	Supplied as 0.22µm filtered solution in 50mM Tris, 150mM NaCl, 10% glycerol (pH 8.5).
Bio-activity	
Molecular Mass	The protein has a predicted MW of 24.8 kDa same as Tris-Bis PAGE result.
Endotoxin	Less than 1EU per µg by the LAL method.
Purity	> 95% as determined by Tris-Bis PAGE; > 90% as determined by HPLC.
Storage	Valid for 12 months from date of receipt when stored at -80°C.; Recommend to aliquot the protein into smaller quantities for optimal storage. Please do not repeated freeze-thaw cycles.
Reconstitution	It is recommended that sterile water be added to the vial to prepare a stock solution of

 Tel: 1-631-559-9269 1-516-512-3133

 Email: info@creative-biomart.com  Fax: 1-631-938-8127

 45-1 Ramsey Road, Shirley, NY 11967, USA

0.2 ug/ul. Centrifuge the vial at 4°C before opening to recover the entire contents.

GENE INFORMATION

Gene Name [BPIFA1 BPI fold containing family A, member 1 \[Homo sapiens \]](#)

Official Symbol [BPIFA1](#)

Synonyms BPIFA1; BPI fold containing family A, member 1; LUNX; NASG; PLUNC; SPURT; SPLUNC1; bA49G10.5; BPI fold-containing family A member 1; protein Plunc; von Ebner protein HI; lung-specific protein X; ligand-binding protein RYA3; tracheal epithelium enriched protein; tracheal epithelium-enriched protein; nasopharyngeal carcinoma-related protein; palate, lung and nasal epithelium associated; secretory protein in upper respiratory tracts; palate lung and nasal epithelium clone protein; UNQ787/PRO1606

Gene ID [51297](#)

mRNA Refseq [NM_130852](#)

Protein Refseq [NP_057667](#)

MIM [607412](#)

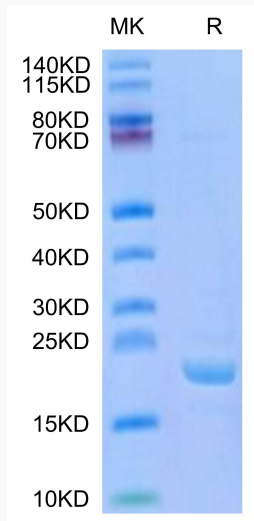
UniProt ID [Q9NP55](#)

 Tel: 1-631-559-9269 1-516-512-3133

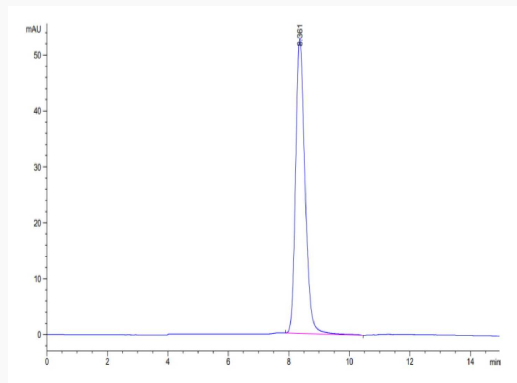
 Email: info@creative-biomart.com  Fax: 1-631-938-8127

 45-1 Ramsey Road, Shirley, NY 11967, USA

Tris-Bis PAGE



SEC-HPLC



 Tel: 1-631-559-9269 1-516-512-3133

 Email: info@creative-biomart.com  Fax: 1-631-938-8127

 45-1 Ramsey Road, Shirley, NY 11967, USA