

Recombinant Human BPIFA1 protein, His-tagged

Cat. No. BPIFA1-2142H Lot. No. (See product label)

SPECIFICATION

Product Overview	Recombinant Human BPIFA1 protein(1-256 aa), fused with N-terminal His tag, was expressed in E.coli.
Species	Human
Source	E.coli
ProteinLength	1-256 aa
Form	The purified protein was Lyophilized from sterile PBS (58mM Na ₂ HPO ₄ , 17mM NaH ₂ PO ₄ , 68mM NaCl, pH7.4). 5 % trehalose and 5 % mannitol are added as protectant before lyophilization. The elution buffer contain 300mM imidazole.
AASequence	MFQTGGLIVFYGLLAQTMAQFGGLPVPLDQTLPLNVNPALPLSPTGLAGSLTNALSN GLLSGGLLGILENLPLLDILKPGGGTSGGLLGLLGKVTVIPGLNNIIDIKVTDQPQLE LGLVQSPDGHRLYVTIPLGIKLVNTPLVGASLLRLAVKLDITAEILAVRDKQERIHVLV GDCTHSPGSLQISLLDGLGPLPIQGLLDLSLTGILNKVLPVLVQGNVCPLVNEVLRGLDI TLVHDIVNMLIHGLQFVIKV
Purity	85%, by SDS-PAGE with Coomassie Brilliant Blue staining.
Storage	Store at 2-8°C for 1-2 weeks. Aliquot and store at -20°C to -80°C for up to 3 months, reconstitution with sterile water and addition of an equal volume of glycerol. Avoid repeat freeze-thaw cycles.

 Tel: 1-631-559-9269 1-516-512-3133

 Email: info@creative-biomart.com  Fax: 1-631-938-8127

 45-1 Ramsey Road, Shirley, NY 11967, USA

Reconstitution

Dissolve the product in 200 µl sterile water to achieve a working concentration of 0.25 g/µl. If experimental compatibility allows, mix the aqueous solution with an equal volume of glycerol (1:1 ratio) after initial reconstitution.

GENE INFORMATION

Gene Name

BPIFA1 BPI fold containing family A, member 1 [Homo sapiens]

Official Symbol

BPIFA1

Synonyms

BPIFA1; BPI fold containing family A, member 1; LUNX; NASG; PLUNC; SPURT; SPLUNC1; bA49G10.5; BPI fold-containing family A member 1; protein Plunc; von Ebner protein HI; lung-specific protein X; ligand-binding protein RYA3; tracheal epithelium enriched protein; tracheal epithelium-enriched protein; nasopharyngeal carcinoma-related protein; palate, lung and nasal epithelium associated; secretory protein in upper respiratory tracts; palate lung and nasal epithelium clone protein; UNQ787/PRO1606

Gene ID

51297

mRNA Refseq

NM_130852

Protein Refseq

NP_057667

MIM

607412

UniProt ID

Q9NP55

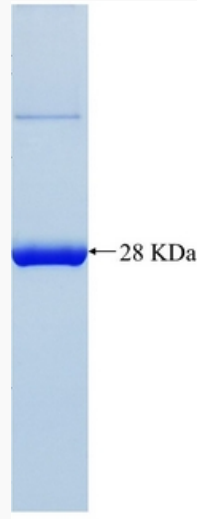
 Tel: 1-631-559-9269 1-516-512-3133

 Email: info@creative-biomart.com  Fax: 1-631-938-8127

 45-1 Ramsey Road, Shirley, NY 11967, USA



SDS-PAGE



Tel: 1-631-559-9269 1-516-512-3133

Email: info@creative-biomart.com Fax: 1-631-938-8127

45-1 Ramsey Road, Shirley, NY 11967, USA