

# Recombinant Full Length Human BPIFA1 Protein, C-Flag-tagged

**Cat. No.** BPIFA1-989HFL    **Lot. No.** (See product label)

## SPECIFICATION

<b>Product Overview</b>	Recombinant Full Length Human BPIFA1 Protein, fused to Flag-tag at C-terminus, was expressed in Mammalian cells.
<b>Species</b>	Human
<b>Source</b>	Mammalian Cells
<b>Description</b>	This gene is the human homolog of murine plunc, and like the mouse gene, is specifically expressed in the upper airways and nasopharyngeal regions. The encoded antimicrobial protein displays antibacterial activity against Gram-negative bacteria. It is thought to be involved in inflammatory responses to irritants in the upper airways and may also serve as a potential molecular marker for detection of micrometastasis in non-small-cell lung cancer. Multiple transcript variants resulting from alternative splicing in the 3' UTR have been detected, but the full-length nature of only three are known.
<b>Form</b>	25 mM Tris HCl, pH 7.3, 100 mM glycine, 10% glycerol.
<b>Molecular Mass</b>	24.6 kDa
<b>AA Sequence</b>	MFQTGGLIVFYGLLAQTMAQFGGLPVPLDQTLPLNVNPALPLSPTGLAGSLTNALSN GLLSGGLLGILEN LPLLDILKPGGGTSGLLGLLGKVTSVIPGLNNIIDIKVTDQPQLE LGLVQSPDGHRLYVTIPLGIKIQ VNTPLVGASLLRLAVKLDITAEILAVRDKQERIHV LGDCTHSPGSLQISLLDGLGPLPIQGLLDLSLTGI

 Tel: 1-631-559-9269    1-516-512-3133

 Email: [info@creative-biomart.com](mailto:info@creative-biomart.com)     Fax: 1-631-938-8127

 45-1 Ramsey Road, Shirley, NY 11967, USA

LNKVLPELVQGNVCPLVNEVLRGLDITLVHDIVNMLIHGLQFVIKVTTRTRPLEQKLISE  
EDLAANDILDYKDDDDKV

<b>Purity</b>	> 80% as determined by SDS-PAGE and Coomassie blue staining.
<b>Stability</b>	Stable for 12 months from the date of receipt of the product under proper storage and handling conditions. Avoid repeated freeze-thaw cycles.
<b>Storage</b>	Store at -80 centigrade.
<b>Concentration</b>	>50 ug/mL as determined by microplate BCA method.
<b>Preparation</b>	Recombinant protein was captured through anti-DDK affinity column followed by conventional chromatography steps.
<b>Protein Families</b>	Secreted Protein
<b>Full Length</b>	Full L.

## GENE INFORMATION

<b>Gene Name</b>	BPIFA1 BPI fold containing family A member 1 [ Homo sapiens (human) ]
<b>Official Symbol</b>	BPIFA1
<b>Synonyms</b>	LUNX; NASG; PLUNC; SPURT; SPLUNC1; bA49G10.5
<b>Gene ID</b>	51297
<b>mRNA Refseq</b>	NM_016583.4

 Tel: 1-631-559-9269 1-516-512-3133

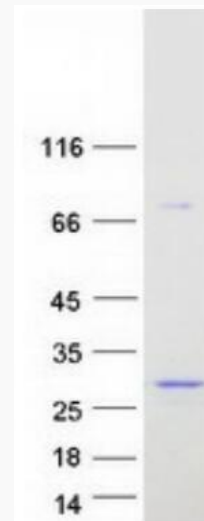
 Email: [info@creative-biomart.com](mailto:info@creative-biomart.com)  Fax: 1-631-938-8127

 45-1 Ramsey Road, Shirley, NY 11967, USA

**Protein Refseq** NP\_057667.1

**MIM** 607412

**UniProt ID** Q9NP55



Coomassie blue staining of purified BPFA1 protein.

 Tel: 1-631-559-9269 1-516-512-3133

 Email: [info@creative-biomart.com](mailto:info@creative-biomart.com)  Fax: 1-631-938-8127

 45-1 Ramsey Road, Shirley, NY 11967, USA