

# Recombinant Human BPIFA2 Protein (14-249 aa), His-SUMOSTAR-tagged

Cat. No. BPIFA2-2254H Lot. No. (See product label)

## SPECIFICATION

<b>Product Overview</b>	Recombinant Human BPIFA2 Protein (14-249 aa) is produced by Yeast expression system. This protein is fused with a 6xHis-SUMOSTAR tag at the N-terminal. Research Area: Developmental Biology. Protein Description: Full Length.
<b>Species</b>	Human
<b>Source</b>	Yeast
<b>ProteinLength</b>	14-249 aa
<b>Description</b>	Has strong antibacterial activity against <i>P. aeruginosa</i> .
<b>Form</b>	Tris-based buffer, 50% glycerol
<b>Molecular Mass</b>	41.1 kDa
<b>AA Sequence</b>	ESLLDNLGNDLSNVVDKLEPVLHEGLETVDNTLKGILEKLKVDLGVLPKSSAWQLAK QKAQEAELNNVISKLLPTNTDIFGLKISNSLILDVKAEPIDGKGLNLSFPVTANVTV AGPIIGQIINLKASDLLTAVTIETDPQTHQPVAVLGECASDPTSISLSLLDKHSQIINKF VNSVINTLKSTVSSLLQKEICPLIRIFIHSLDVNVIQQVVDNPQHKTLQLTLI
<b>Purity</b>	> 90% as determined by SDS-PAGE.
<b>Notes</b>	Repeated freezing and thawing is not recommended. Store working aliquots at 4

Tel: 1-631-559-9269 1-516-512-3133

Email: [info@creative-biomart.com](mailto:info@creative-biomart.com) Fax: 1-631-938-8127

45-1 Ramsey Road, Shirley, NY 11967, USA

centigrade for up to one week.

**Storage**

The shelf life is related to many factors, storage state, buffer ingredients, storage temperature and the stability of the protein itself. Generally, the shelf life of liquid form is 6 months at -20 centigrade/-80 centigrade. The shelf life of lyophilized form is 12 months at -20 centigrade/-80 centigrade.

**Concentration**

A hardcopy of COA will be sent along with the products. Please refer to it for detailed information.

## GENE INFORMATION

**Gene Name**

[BPIFA2 BPI fold containing family A, member 2 \[ Homo sapiens \]](#)

**Official Symbol**

[BPIFA2](#)

**Synonyms**

[BPIFA2](#); [bA49G10.1](#); [PSP](#); [SPLUNC2](#); [parotid secretory protein](#); [C20orf70](#);

**Gene ID**

[140683](#)

**mRNA Refseq**

[NM\\_080574](#)

**Protein Refseq**

[NP\\_542141](#)

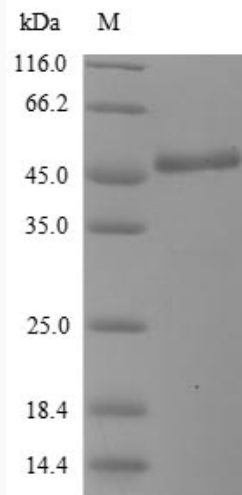
**UniProt ID**

[Q96DR5](#)

 Tel: 1-631-559-9269 1-516-512-3133

 Email: [info@creative-biomart.com](mailto:info@creative-biomart.com)  Fax: 1-631-938-8127

 45-1 Ramsey Road, Shirley, NY 11967, USA



(Tris-Glycine gel) Discontinuous SDS-PAGE (reduced) with 5% enrichment gel and 15% separation gel.

 Tel: 1-631-559-9269 1-516-512-3133

 Email: [info@creative-biomart.com](mailto:info@creative-biomart.com)  Fax: 1-631-938-8127

 45-1 Ramsey Road, Shirley, NY 11967, USA