

Recombinant Human BPIFA2 Protein (14-249 aa)

Cat. No. BPIFA2-2264H Lot. No. (See product label)

SPECIFICATION

Product Overview	Recombinant Human BPIFA2 Protein (14-249 aa) is produced by Yeast expression system. Research Area: Developmental Biology. Protein Description: Full Length of Mature Protein.
Species	Human
Source	Yeast
ProteinLength	14-249 aa
Description	Has strong antibacterial activity against P. aeruginosa.
Form	Tris-based buffer,50% glycerol
Molecular Mass	25.1 kDa
AA Sequence	ESLLDNLGNDLSNVVDKLEPVLHEGLETVDNTLKGILEKLKVDLGVLQKSSAWQLAK QKAQEA EKLLNNVISKLLPTNTDIFGLKISNSLILDVKAEPIDGKGLNLSFPVTANVTV AGPIIGQIINLKASDLLTAVTIETDPQTHQPVAVLGECASDPTSISLSLLDKHSQIINKF VNSVINTLKSTVSSLLQKEICPLIRIFIHSLDVNVIQQVVDNPQHKTQLQTLI
Purity	> 90% as determined by SDS-PAGE.
Notes	Repeated freezing and thawing is not recommended. Store working aliquots at 4 centigrade for up to one week.

 Tel: 1-631-559-9269 1-516-512-3133

 Email: info@creative-biomart.com  Fax: 1-631-938-8127

 45-1 Ramsey Road, Shirley, NY 11967, USA

Storage

The shelf life is related to many factors, storage state, buffer ingredients, storage temperature and the stability of the protein itself. Generally, the shelf life of liquid form is 6 months at -20 centigrade/-80 centigrade. The shelf life of lyophilized form is 12 months at -20 centigrade/-80 centigrade.

Concentration

A hardcopy of COA will be sent along with the products. Please refer to it for detailed information.

GENE INFORMATION

Gene Name

BPIFA2 BPI fold containing family A, member 2 [Homo sapiens]

Official Symbol

BPIFA2

Synonyms

BPIFA2; bA49G10.1; PSP; SPLUNC2; parotid secretory protein; C20orf70;

Gene ID

140683

mRNA Refseq

NM_080574

Protein Refseq

NP_542141

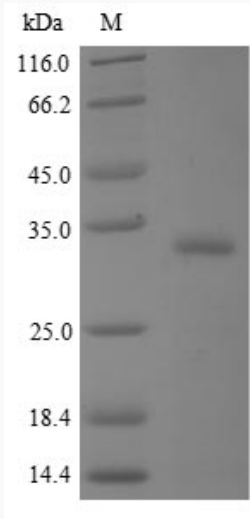
UniProt ID

Q96DR5

 Tel: 1-631-559-9269 1-516-512-3133

 Email: info@creative-biomart.com  Fax: 1-631-938-8127

 45-1 Ramsey Road, Shirley, NY 11967, USA



(Tris-Glycine gel) Discontinuous SDS-PAGE (reduced) with 5% enrichment gel and 15% separation gel.

 Tel: 1-631-559-9269 1-516-512-3133

 Email: info@creative-biomart.com  Fax: 1-631-938-8127

 45-1 Ramsey Road, Shirley, NY 11967, USA