

# Recombinant Full Length Human BPIFB1 Protein, C-Flag-tagged

**Cat. No.** BPIFB1-1063HFL    **Lot. No.** (See product label)

## SPECIFICATION

<b>Product Overview</b>	Recombinant Full Length Human BPIFB1 Protein, fused to Flag-tag at C-terminus, was expressed in Mammalian cells.
<b>Species</b>	Human
<b>Source</b>	Mammalian Cells
<b>Description</b>	The protein encoded by this gene may be involved in the innate immune response to bacterial exposure in the mouth, nasal cavities, and lungs. The encoded protein is secreted and is a member of the BPI/LBP/PLUNC protein superfamily. This gene is found with other members of the superfamily in a cluster on chromosome 20.
<b>Form</b>	25 mM Tris HCl, pH 7.3, 100 mM glycine, 10% glycerol.
<b>Molecular Mass</b>	50.2 kDa
<b>AA Sequence</b>	MAGPWTFLLCGLLAATLIQATLSPTAVLILGPKVIKEKLTQELKDHNATSILQQLPLLS AMREKPAGGI PVLGSLVNTVLKHIIWLKVVITANILQLQVKPSANDQELLVKIPLDMVAG FNTPLVKTIVEFHMTTEAQAT IRMDTSASGPTLVLSDCATSHGSLRIQLLHKLSFLV NALAKQVMNLLVPSLPNLVKNQLCPVIEASFNG MYADLLQLVKVPISLSIDRLEFDLL YPAIKGDTIQLYLGAKLLDSQGKVTKWFNNSAASLTMPDLNIPF SLIVSQDVVKA AAVLSPEEFMVLLDSVLPESAHLKSSIGLINEKAADKLGSTQIVKILTQDTPEFFI DQ GHAKVAQLIVLEVFPSSALRPLFTLGIEASSEAQFYTKGDQLILNLNNISSDRIQLMN SGIGWFQPD

 Tel: 1-631-559-9269    1-516-512-3133

 Email: [info@creative-biomart.com](mailto:info@creative-biomart.com)     Fax: 1-631-938-8127

 45-1 Ramsey Road, Shirley, NY 11967, USA

VLKNIITEIIHSILLPNQNGKLRSGVPVSLVKALGFEEAESSLTKDALVLTPASLWKPSS  
PVSQTRTRPQLISEEDLAANDILDYKDDDDKV

<b>Purity</b>	> 80% as determined by SDS-PAGE and Coomassie blue staining.
<b>Stability</b>	Stable for 12 months from the date of receipt of the product under proper storage and handling conditions. Avoid repeated freeze-thaw cycles.
<b>Storage</b>	Store at -80 centigrade.
<b>Concentration</b>	>50 ug/mL as determined by microplate BCA method.
<b>Preparation</b>	Recombinant protein was captured through anti-DDK affinity column followed by conventional chromatography steps.
<b>Protein Families</b>	Druggable Genome, Secreted Protein, Transmembrane
<b>Full Length</b>	Full L.

## GENE INFORMATION

<b>Gene Name</b>	BPIFB1 BPI fold containing family B member 1 [ Homo sapiens (human) ]
<b>Official Symbol</b>	BPIFB1
<b>Synonyms</b>	LPLUNC1; C20orf114
<b>Gene ID</b>	92747
<b>mRNA Refseq</b>	NM_033197.3

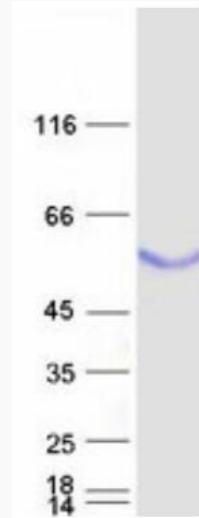
 Tel: 1-631-559-9269 1-516-512-3133

 Email: [info@creative-biomart.com](mailto:info@creative-biomart.com)  Fax: 1-631-938-8127

 45-1 Ramsey Road, Shirley, NY 11967, USA

Protein Refseq NP\_149974.2

UniProt ID Q8TDL5



Coomassie blue staining of purified BPIFB1 protein.

Tel: 1-631-559-9269 1-516-512-3133

Email: [info@creative-biomart.com](mailto:info@creative-biomart.com) Fax: 1-631-938-8127

45-1 Ramsey Road, Shirley, NY 11967, USA