

Recombinant Human BPIFB1 Protein, Myc/DDK-tagged, C13 and N15-labeled

Cat. No. BPIFB1-3783H Lot. No. (See product label)

SPECIFICATION

Product Overview	C20orf114 MS Standard C13 and N15-labeled recombinant protein (NP_149974) with a C-terminal MYC/DDK tag, was expressed in HEK293 cells.
Species	Human
Source	HEK293
Description	The protein encoded by this gene may be involved in the innate immune response to bacterial exposure in the mouth, nasal cavities, and lungs. The encoded protein is secreted and is a member of the BPI/LBP/PLUNC protein superfamily. This gene is found with other members of the superfamily in a cluster on chromosome 20.
Molecular Mass	52.4 kDa
AA Sequence	<p>MAGPWTFTLLCGLLAATLIQATLSPTAVLILGPKVIKEKLTQELKDHNATSILQQPLLS AMREKPAGGIPVLGSLVNTVLKHIIWLKVITANILQLQVKPSANDQELLVKIPLDMVAG FNTPLVKTIVEFHMTTEAQATIRMDTSASGPTRLVLSDCATSHGSLRIQLLHKLSFLV NALAKQVMNLLVPSLPNLVKNQLCPVIEASFNMGMYADLLQLVKVPISLSIDRLEFDLLY PAIKGDTIQLYLGAKLLDSQGKVTWKFNNSAASLTMPDLNIPFSLIVSQDVVKAAVA AVLSPEEFMVLVLDVLPESAHLKSSIGLINEKAADKLGSTQIVKILTQDTPEFFIDQG HAKVAQLIVLEVFPSSSEALRPLFTLGIASSEAQFYTKGDQLILNLNINISSDRIQLMNS GIGWFQPDVLKNIITEIIHSILLPNQNGKLRSGVPVSLVKALGFEEAESSLTKDALVLP ASLWKPSSPVSQTRTRPLEQKLISEEDLAANDILDYKDDDDKV</p>

 Tel: 1-631-559-9269 1-516-512-3133

 Email: info@creative-biomart.com  Fax: 1-631-938-8127

 45-1 Ramsey Road, Shirley, NY 11967, USA

Purity	> 80% as determined by SDS-PAGE and Coomassie blue staining
Stability	Stable for 3 months from receipt of products under proper storage and handling conditions.
Storage	Store at -80 centigrade. Avoid repeated freeze-thaw cycles.
Concentration	50 µg/mL as determined by BCA
Storage Buffer	100 mM glycine, 25 mM Tris-HCl, pH 7.3.

GENE INFORMATION

Gene Name	BPIFB1 BPI fold containing family B member 1 [Homo sapiens (human)]
Official Symbol	BPIFB1
Synonyms	BPI fold containing family B, member 1; C20orf114; Long palate; LPLC1_HUMAN; Lplunc1; lung and nasal epithelium carcinoma-associated protein 1; VEMSGP; Von Ebner minor salivary gland protein; BPIFB1
Gene ID	92747
mRNA Refseq	NM_033197
Protein Refseq	NP_149974
UniProt ID	Q8TDL5

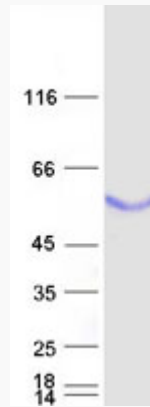
 Tel: 1-631-559-9269 1-516-512-3133

 Email: info@creative-biomart.com  Fax: 1-631-938-8127

 45-1 Ramsey Road, Shirley, NY 11967, USA



SDS-PAGE



☎ Tel: 1-631-559-9269 1-516-512-3133

☎ Email: info@creative-biomart.com ☎ Fax: 1-631-938-8127

☎ 45-1 Ramsey Road, Shirley, NY 11967, USA