

Recombinant Human BRAF, GST-tagged, Active

Cat. No. BRAF-253H Lot. No. (See product label)

SPECIFICATION

Product Overview	Recombinant human BRAF (416-766) was expressed by baculovirus in <i>Sf9 insect cell</i> using a N-terminal GST tag. MW = 63 kDa.
Species	Human
Source	Sf9 Cells
Protein Length	416-766 a.a.
Description	BRAF is a member of the RAF family that is activated by members of the Ras family upon growth factor-induced stimulation. Active Ras can induce heterodimerization of cRaf and BRAF and this may explain the observed cooperativity of cRaf and BRaf in cells responding to growth factor signals. Activating mutations in the BRAF gene are present in a large percentage of human malignant melanomas and in a proportion of colon cancers. The vast majority of these mutations result in a valine to glutamic acid change at residue 599 within the activation segment of B-RAF.
Sequence	416-766.
Applications	Kinase Assay, Western Blot.
Storage And Stability	Store product at -70°C . For optimal storage, aliquot target into smaller quantities after centrifugation and store at recommended temperature. For most favorable performance, avoid repeated handling and multiple freeze/thaw cycles.

 Tel: 1-631-559-9269 1-516-512-3133

 Email: info@creative-biomart.com  Fax: 1-631-938-8127

 45-1 Ramsey Road, Shirley, NY 11967, USA

GENE INFORMATION

Gene Name BRAF v-raf murine sarcoma viral oncogene homolog B1 [Homo sapiens]

Synonyms

v-raf murine sarcoma viral oncogene homolog B1; BRAF1; RAFB1; B-RAF1; FLJ95109; MGC126806; MGC138284; BRAF; B-Raf; 94 kDa B-raf protein; murine sarcoma viral (v-raf) oncogene homolog B1; B-Raf proto-oncogene serine/threonine-protein kinase (p94); B-Raf; EC 2.7.11.1; p94

Gene ID 673

mRNA Refseq NM_004333

Protein Refseq NP_004324


MIM 164757

UniProt ID P15056


Chromosome Location 7q34

Pathway

Acute myeloid leukemia; Bladder cancer; Chemokine signaling pathway; Chronic myeloid leukemia; Colorectal cancer; Endometrial cancer; ErbB signaling pathway; Focal adhesion; Glioma; Insulin signaling pathway; Long-term depression; Long-term potentiation; MAPK signaling pathway; Melanoma; Natural killer cell mediated cytotoxicity; Neurotrophin signaling pathway; Non-small cell lung cancer; Pancreatic cancer; Pathways in cancer; Progesterone-mediated oocyte maturation; Prostate cancer; Regulation of actin cytoskeleton; Renal cell carcinoma; Thyroid cancer; Vascular smooth muscle contraction; mTOR signaling pathway

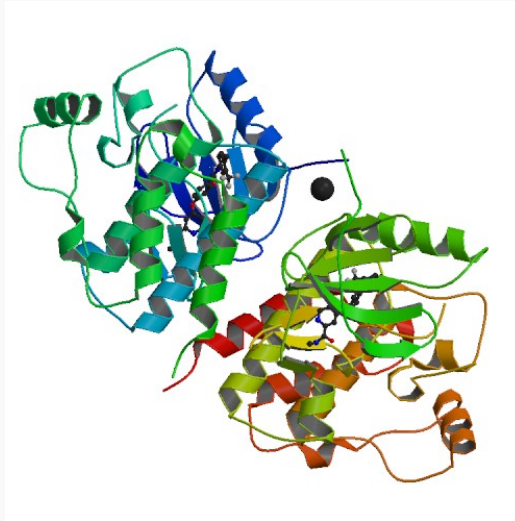
 Tel: 1-631-559-9269 1-516-512-3133

 Email: info@creative-biomart.com  Fax: 1-631-938-8127

 45-1 Ramsey Road, Shirley, NY 11967, USA

Function

mitogen-activated protein kinase kinase binding; MAP kinase kinase kinase activity; protein heterodimerization activity; protein serine/threonine kinase activity; protein tyrosine kinase activity; receptor signaling protein activity; ATP binding; metal ion binding; nucleotide binding; protein binding; transferase activity; zinc ion binding

PDB rendering based on 1uwh.

 Tel: 1-631-559-9269 1-516-512-3133

 Email: info@creative-biomart.com  Fax: 1-631-938-8127

 45-1 Ramsey Road, Shirley, NY 11967, USA