

Active Recombinant Full Length Human BRAF Protein, Flag tagged

Cat. No. BRAF-68HFL **Lot. No.** (See product label)

SPECIFICATION

Product Overview	Recombinant protein of human v-raf murine sarcoma viral oncogene homolog B1 (BRAF) with C-Myc/DDK tag was expressed in HEK293T.
Species	Human
Source	HEK293
ProteinLength	1-766 aa
Description	This gene encodes a protein belonging to the RAF family of serine/threonine protein kinases. This protein plays a role in regulating the MAP kinase/ERK signaling pathway, which affects cell division, differentiation, and secretion. Mutations in this gene, most commonly the V600E mutation, are the most frequently identified cancer-causing mutations in melanoma, and have been identified in various other cancers as well, including non-Hodgkin lymphoma, colorectal cancer, thyroid carcinoma, non-small cell lung carcinoma, hairy cell leukemia and adenocarcinoma of lung. Mutations in this gene are also associated with cardiofaciocutaneous, Noonan, and Costello syndromes, which exhibit overlapping phenotypes. A pseudogene of this gene has been identified on the X chromosome.
Tag	C-Flag
Bio-activity	BRAF kinase activity was measured in an HTRF assay. Varying concentrations of BRAF were added to a reaction mix containing ATP and a biotinylated kinase

 Tel: 1-631-559-9269 1-516-512-3133

 Email: info@creative-biomart.com  Fax: 1-631-938-8127

 45-1 Ramsey Road, Shirley, NY 11967, USA

substrate (HTRF substrate 2) and was incubated at 37 centigrade for phosphorylation. HTRF detection reagents were then added, the reaction was incubated for 30 minutes at room temperature. Time-resolved fluorescent signal (Delta R) was measured on a Flexstation 3 microplate reader.

AA Sequence

MAALSGGGGGGAEPGQALFNGDMEPEAGAGAGAAAASSAADPAIPEEVWNIKQMIK
 LTQEHIEALLDKFGGEHNPPSIYLEAYEEYTSKLDALQQREQLLES LGNGTDFSVS
 SSASMDTVTSSSSSSLSVLPSSLSVFNPTDVARSNPKSPQKPIVRVFLPNKQRTVV
 PARCGVTVRDSLKKALMMRGLIPECCAVYRIQDGEKKPIGWDTDISWLTGEELHVEV
 LENVPLTTHNFVRKTFFTLAFCDFCRKLFFQGFRCQTCGYKFHQRCSTEVPLMCVN
 YDQLDLLFVSKFFEHHPIPQEEASLAETALTSGSSPSAPASDSIGPQILTSPSPSKSIPI
 PQQFRPADEDHRNQFGQRDRSSSAPNVHINTIEPVNIDDLIRDQGFGRDGGSTTGL
 SATPPASLPGSLTNVKALQKSPGPQRERKSSSSSEDRNRMKTLGRRDSSDDWEIP
 DGQITVGQRIGSGSFGTVYKKGKWHGDVAVKMLNVTAPTPQQQLQAFKNEVGVLKRT
 RHNILLFMGYSTKPQLAIVTQWCEGSSLYHHLHIIETKFEMIKLIDIARQTAQGMDYL
 HAKSIIHRDLKSNIFLHEDLTVKIGDFGLATVKSRWSGSHQFEQLSGSILWMAPEVI
 RMQDKNPYSFQSDVYAFGIVLYELMTGQLPYSNINNRDQIIFMVGRGYLSPDLSKVR
 SNCPKAMKRLMAECLKKRDERPLFPQILASIPELLARSLPKIHRSAEPLNRAGFQT
 EDFSLYACASPKTPIQAGGYGAFPVHTRTRPLEQKLISEEDLAANDILDYKDDDDKV

Purity

> 80% as determined by SDS-PAGE and Coomassie blue staining

Notes

For testing in cell culture applications, please filter before use. Note that you may experience some loss of protein during the filtration process.

Stability

Stable for 12 months from the date of receipt of the product under proper storage and handling conditions. Avoid repeated freeze-thaw cycles.

Storage

Store at -80 centigrade.

 Tel: 1-631-559-9269 1-516-512-3133

 Email: info@creative-biomart.com  Fax: 1-631-938-8127

 45-1 Ramsey Road, Shirley, NY 11967, USA

Concentration > 0.1 µg/µL as determined by microplate BCA method

Storage Buffer 25 mM Tris-HCl, 100 mM glycine, pH 7.3, 10% glycerol

GENE INFORMATION

Gene Name BRAF B-Raf proto-oncogene, serine/threonine kinase [Homo sapiens (human)]

Official Symbol BRAF

Synonyms

BRAF; B-Raf proto-oncogene, serine/threonine kinase; NS7; B-raf; BRAF1; RAFB1; B-RAF1; BRAF-1; serine/threonine-protein kinase B-raf; 94 kDa B-raf protein; B-Raf proto-oncogene serine/threonine-protein kinase (p94); B-Raf serine/threonine-protein; murine sarcoma viral (v-raf) oncogene homolog B1; proto-oncogene B-Raf; v-raf murine sarcoma viral oncogene homolog B; v-raf murine sarcoma viral oncogene homolog B1; EC 2.7.11.1

Gene ID 673

mRNA Refseq NM_004333

Protein Refseq NP_004324

MIM 164757

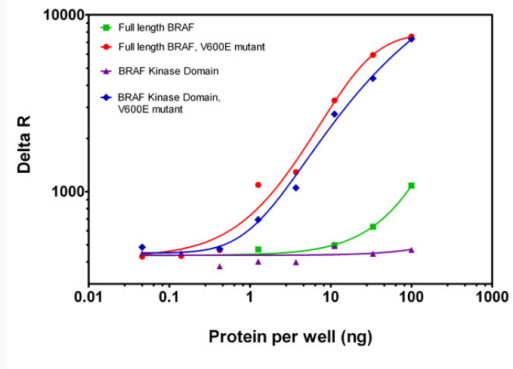
UniProt ID P15056

 Tel: 1-631-559-9269 1-516-512-3133

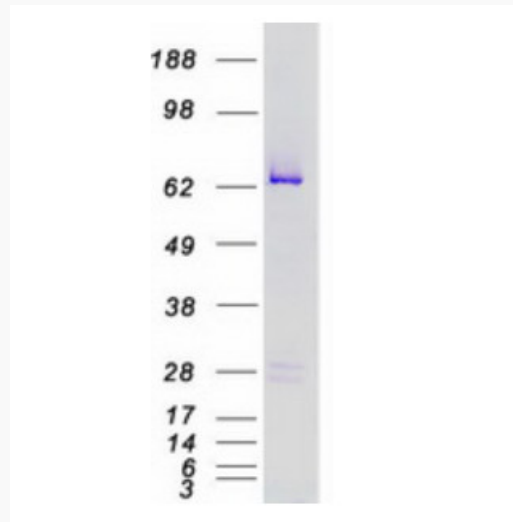
 Email: info@creative-biomart.com  Fax: 1-631-938-8127

 45-1 Ramsey Road, Shirley, NY 11967, USA

Activity



SDS-PAGE



Coomassie blue staining of purified BRAF protein.

 Tel: 1-631-559-9269 1-516-512-3133

 Email: info@creative-biomart.com  Fax: 1-631-938-8127

 45-1 Ramsey Road, Shirley, NY 11967, USA