

## Recombinant Human BRAT1 Protein, GST-Tagged

Cat. No. BRAT1-0139H Lot. No. (See product label)

### SPECIFICATION

<b>Product Overview</b>	Human BRAT1 full-length ORF (NP_689956.1, 1 a.a. - 821 a.a.) recombinant protein with GST-tag at N-terminal.
<b>Species</b>	Human
<b>Source</b>	Wheat Germ
<b>Description</b>	The protein encoded by this ubiquitously expressed gene interacts with the tumor suppressing BRCA1 (breast cancer 1) protein and and the ATM (ataxia telangiectasia mutated) protein. ATM is thought to be a master controller of cell cycle checkpoint signalling pathways that are required for cellular responses to DNA damage such as double-strand breaks that are induced by ionizing radiation and complexes with BRCA1 in the multi-protein complex BASC (BRAC1-associated genome surveillance complex). The protein encoded by this gene is thought to play a role in the DNA damage pathway regulated by BRCA1 and ATM. [provided by RefSeq, Mar 2012]
<b>Molecular Mass</b>	114.4 kDa
<b>AA Sequence</b>	MDPECAQLLPALCAVLVDPGQPVADDTCLEKLLDWFKTVTEGESSVLLQEHPCLV ELLSHV LK VQDLSSGVLSFSLRLAGTFAAQENCFQYLQQGELLPGLFGEPGPLGRAT WAVPTVRSGWIQGLRSLAQHPSALRFLADHGAVDTIFSLQGSSLFVASAASQLLVH VLALSMRGG AEGQPCLPGGDWPACAQKIMDHVEESLCSAATPKVTQALNVLTTTFG RCQSPWTEALWVRLSPRVACLLERDPIPAHSFV D L L L C V A R S P V F S S S D G S L W E T VARALSCLGPTHMGPLALGILKLEHCPQALRTQAFQVLLQPLACVLKATVQAPGPPG

 Tel: 1-631-559-9269 1-516-512-3133

 Email: [info@creative-biomart.com](mailto:info@creative-biomart.com)  Fax: 1-631-938-8127

 45-1 Ramsey Road, Shirley, NY 11967, USA

LLDGTADDATTVDLTLASKSSCAGLLCRTLAHLEELQPLPQRPSWPQASLLGATVT  
 VLRLCDGSAAPASSVGGHLCGTLAGCVRVQRAALDFLGTLSQGTGPQELVTQALAV  
 LLECLESPPGSSPTVLKKAQATLRWLLSSPKTPGCSLDLGLIPQFLRELFVVLQKRLC  
 HPCWEVRDSALEFLTQLSRHWGGQADFRCALLASEVPQLALQLLQDPESYVRASA  
 VTAMGQLSSQGLHAPTSPEHAEARQSLFLELLHILSVDESEGFPRRAVMQVFTEWLR  
 DGHADAAQDTEQFVATVLQAASRDLDWEVRAQGLELALVFLGQTLGPPRTHCPYA  
 VALPEVAPAQPLTEALRALCHVGLFDFAFCALFDCDRPVAQKSCDLLLFLRDKIASYS  
 SLREARGSPNTASAEATLPRWRAGEQAQPPGDQEPEAVLAMLRLSLDLEGLRSTLAE  
 SSDHVEKSPQSLLQDMLATGGFLQGDEADCY

**Applications**  
 Enzyme-linked Immunoabsorbent Assay  
 Western Blot (Recombinant protein)  
 Antibody Production  
 Protein Array

**Notes** Best use within three months from the date of receipt of this protein.

**Storage** Store at -80 centigrade. Aliquot to avoid repeated freezing and thawing.

**Storage Buffer** 50 mM Tris-HCl, 10 mM reduced Glutathione, pH=8.0 in the elution buffer.

## GENE INFORMATION

**Gene Name** BRAT1 BRCA1-associated ATM activator 1 [ Homo sapiens ]

**Official Symbol** BRAT1

**Synonyms** BRAT1; BRCA1-associated ATM activator 1; BAAT1, C7orf27, chromosome 7 open reading frame 27; BRCA1 associated protein required for ATM activation protein 1; MGC22916; HEAT repeat-containing protein C7orf27; BRCA1-associated protein required for ATM activation protein 1; BAAT1; RMFSL; C7orf27;

 Tel: 1-631-559-9269 1-516-512-3133

 Email: [info@creative-biomart.com](mailto:info@creative-biomart.com)  Fax: 1-631-938-8127

 45-1 Ramsey Road, Shirley, NY 11967, USA

Gene ID 221927

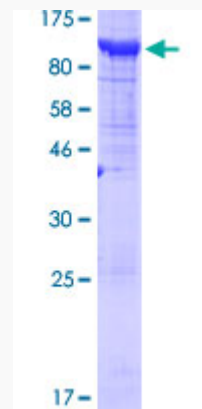
mRNA Refseq NM\_152743

Protein Refseq NP\_689956

MIM 614506

UniProt ID Q6PJG6

**Quality Control  
Testing**



12.5% SDS-PAGE Stained with Coomassie Blue.

 Tel: 1-631-559-9269 1-516-512-3133

 Email: [info@creative-biomart.com](mailto:info@creative-biomart.com)  Fax: 1-631-938-8127

 45-1 Ramsey Road, Shirley, NY 11967, USA