

Recombinant Human BRAT1 Over-expression Lysate, Flag tagged

Cat. No. BRAT1-10HCL Lot. No. (See product label)

SPECIFICATION

Product Overview	BRAT1 HEK293T cell transient overexpression lysate (as WB positive control) with Flag tag was expressed in HEK293. Components: 1 vial of 20 µg lyophilized gene specific transient over-expression cell lysate.
Species	Human
Source	HEK293
Description	The protein encoded by this ubiquitously expressed gene interacts with the tumor suppressing BRCA1 (breast cancer 1) protein and and the ATM (ataxia telangiectasia mutated) protein. ATM is thought to be a master controller of cell cycle checkpoint signalling pathways that are required for cellular responses to DNA damage such as double-strand breaks that are induced by ionizing radiation and complexes with BRCA1 in the multi-protein complex BASC (BRAC1-associated genome surveillance complex). The protein encoded by this gene is thought to play a role in the DNA damage pathway regulated by BRCA1 and ATM.
Molecular Mass	88 kDa
Stability	Lysate samples are stable for 12 months from date of receipt when stored at -20 centigrade.
Storage	Upon receiving, store the sample at -20 centigrade. Avoid repeated freeze-thaw cycles after reconstitution.

 Tel: 1-631-559-9269 1-516-512-3133

 Email: info@creative-biomart.com  Fax: 1-631-938-8127

 45-1 Ramsey Road, Shirley, NY 11967, USA

Reconstitution Lysate samples can be reconstituted with SDS Sample Buffer.

Shipping The lysate can be shipped at ambient temperature.

GENE INFORMATION

Gene Name BRAT1 BRCA1-associated ATM activator 1 [Homo sapiens (human)]

Official Symbol BRAT1

Synonyms

BRAT1; BRCA1-associated ATM activator 1; BAAT1, C7orf27, chromosome 7 open reading frame 27; BRCA1 associated protein required for ATM activation protein 1; MGC22916; HEAT repeat-containing protein C7orf27; BRCA1-associated protein required for ATM activation protein 1; BAAT1; RMFSL; C7orf27;

Gene ID 221927

mRNA Refseq NM_152743

Protein Refseq NP_689956

MIM 614506

UniProt ID Q6PJG6

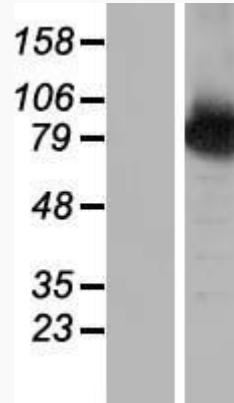
 Tel: 1-631-559-9269 1-516-512-3133

 Email: info@creative-biomart.com  Fax: 1-631-938-8127

 45-1 Ramsey Road, Shirley, NY 11967, USA



WB



Tel: 1-631-559-9269 1-516-512-3133

Email: info@creative-biomart.com Fax: 1-631-938-8127

45-1 Ramsey Road, Shirley, NY 11967, USA