

Recombinant Human BRAT1 Protein, Myc/DDK-tagged, C13 and N15-labeled

Cat. No. BRAT1-5239H Lot. No. (See product label)

SPECIFICATION

Product Overview

C7orf27 MS Standard C13 and N15-labeled recombinant protein (NP_689956) with a C-terminal MYC/DDK tag, was expressed in HEK293 cells.

Species

Human

Source

HEK293

Description

The protein encoded by this ubiquitously expressed gene interacts with the tumor suppressing BRCA1 (breast cancer 1) protein and the ATM (ataxia telangiectasia mutated) protein. ATM is thought to be a master controller of cell cycle checkpoint signalling pathways that are required for cellular responses to DNA damage such as double-strand breaks that are induced by ionizing radiation and complexes with BRCA1 in the multi-protein complex BASC (BRCA1-associated genome surveillance complex). The protein encoded by this gene is thought to play a role in the DNA damage pathway regulated by BRCA1 and ATM.

Molecular Mass

88 kDa

AA Sequence

MDPECAQLLPALCAVLVDPGQPVADDTCKLLDWFKTVTEGESSVLLQEHPCLV
 ELLSHVLKVQDLSSGVLSFSLRLAGTFAAQENCFQYLQQGELLPLGFGEPGLGRAT
 WAVPTVRSGWIQGLRSLAQHPSALRFLADHGAVDTIFSLQGDSSLFVASAASQLLVH
 VLALSMRGGAEQGQPCLPGGDWPACAQKIMDHVEESLCSAATPKVTQALNVLTTTFG
 RCQSPWTEALWVRLSPRVACLLERDPIPAHHSFVDLLLCVARSPVFSSSDGSLWET

 Tel: 1-631-559-9269 1-516-512-3133

 Email: info@creative-biomart.com  Fax: 1-631-938-8127

 45-1 Ramsey Road, Shirley, NY 11967, USA

VARALSCLGPTHMGPLALGILKLEHCPQALRTQAFQVLLQPLACVLKATVQAPGPPG
 LLDGTADDATTVDTLASKSSCAGLLCRTLAHLEELQPLPQRPSWPQASLLGATVT
 VLRLCDGSAAPASSVGGHLCGTLAGCVRVQRAALDFLGTLSQGTGPQELVTQALAV
 LLECLESPPSSPTVLKKAQATLRWLLSSPKTPGCSLDGLIPQFLRELFVLPVLRKLC
 HPCWEVRDSALEFLTQLSRHWGGQADFRCALLASEVPQLALQLLQDPESYVRASA
 VTAMGQLSSQGLHAPTSPEHAEARQSLFLELLHILSVNSEGFPRRAVMQVFTEWLR
 DGHADAAQDTEQFVATVLQAASRDLDWEVRAQGLELALVFLGQTLGPPRTHCPYA
 VALPEVAPAQPLTEALRALCHVGLFDFAFCALFDCDRPVAQKSCDLLLFLRDKIASYS
 SLREARGSPNTASAEATLPRWRAGEQAQPPGDQEPEAVLAMLRLSLDLEGLRSTLAE
 SSDHVEKSPQSLLQDMLATGGFLQGDEADCYTRTRPLEQKLISEEDLAANDILDYKD
 DDDKV

Purity > 80% as determined by SDS-PAGE and Coomassie blue staining

Stability Stable for 3 months from receipt of products under proper storage and handling conditions.

Storage Store at -80 centigrade. Avoid repeated freeze-thaw cycles.

Concentration 50 µg/mL as determined by BCA

Storage Buffer 100 mM glycine, 25 mM Tris-HCl, pH 7.3.

GENE INFORMATION

Gene Name BRAT1 BRCA1-associated ATM activator 1 [Homo sapiens (human)]

Official Symbol BRAT1

Synonyms BRAT1; BRCA1-associated ATM activator 1; BAAT1, C7orf27, chromosome 7 open reading frame 27; BRCA1 associated protein required for ATM activation protein 1;

 Tel: 1-631-559-9269 1-516-512-3133

 Email: info@creative-biomart.com  Fax: 1-631-938-8127

 45-1 Ramsey Road, Shirley, NY 11967, USA

MGC22916; HEAT repeat-containing protein C7orf27; BRCA1-associated protein required for ATM activation protein 1; BAAT1; RMFSL; C7orf27;

Gene ID [221927](#)

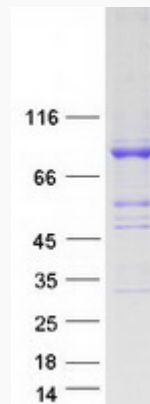
mRNA Refseq [NM_152743](#)

Protein Refseq [NP_689956](#)

MIM [614506](#)

UniProt ID [Q6PJG6](#)

SDS-PAGE



 Tel: 1-631-559-9269 1-516-512-3133

 Email: info@creative-biomart.com  Fax: 1-631-938-8127

 45-1 Ramsey Road, Shirley, NY 11967, USA