

Recombinant Human BRCA1 Protein (BRCT domains), N-GST tagged

Cat. No. BRCA1-21H Lot. No. (See product label)

SPECIFICATION

Product Overview

Recombinant Human BRCA1 Protein (BRCT domains) with N-GST tag was expressed in E. coli.

Species

Human

Source

E.coli

Description

This gene encodes a 190 kD nuclear phosphoprotein that plays a role in maintaining genomic stability, and it also acts as a tumor suppressor. The BRCA1 gene contains 22 exons spanning about 110 kb of DNA. The encoded protein combines with other tumor suppressors, DNA damage sensors, and signal transducers to form a large multi-subunit protein complex known as the BRCA1-associated genome surveillance complex (BASC). This gene product associates with RNA polymerase II, and through the C-terminal domain, also interacts with histone deacetylase complexes. This protein thus plays a role in transcription, DNA repair of double-stranded breaks, and recombination. Mutations in this gene are responsible for approximately 40% of inherited breast cancers and more than 80% of inherited breast and ovarian cancers. Alternative splicing plays a role in modulating the subcellular localization and physiological function of this gene. Many alternatively spliced transcript variants, some of which are disease-associated mutations, have been described for this gene, but the full-length natures of only some of these variants has been described. A related pseudogene, which is also located on chromosome 17, has been identified.

 Tel: 1-631-559-9269 1-516-512-3133

 Email: info@creative-biomart.com  Fax: 1-631-938-8127

 45-1 Ramsey Road, Shirley, NY 11967, USA

Molecular Mass	53.3 kDa
Purity	≥90% (estimated by SDS-PAGE)
Stability	≥ 1 year
Storage	At -80 centigrade.
Storage Buffer	50 mM Tris-HCl, pH 8.0, with 150 mM sodium chloride, and 20% glycerol
Shipping	Dry ice in continental US; may vary elsewhere

GENE INFORMATION

Gene Name	BRCA1 BRCA1 DNA repair associated [Homo sapiens (human)]
Official Symbol	BRCA1
Synonyms	BRCA1; BRCA1 DNA repair associated; IRIS; PSCP; BRCAI; BRCC1; FANCS; PNCA4; RNF53; BROVCA1; PPP1R53; breast cancer type 1 susceptibility protein; BRCA1/BRCA2-containing complex, subunit 1; Fanconi anemia, complementation group S; RING finger protein 53; breast and ovarian cancer susceptibility protein 1; breast cancer 1, early onset; early onset breast cancer 1; protein phosphatase 1, regulatory subunit 53; EC 2.3.2.27
Gene ID	672
mRNA Refseq	NM_007300
Protein Refseq	NP_009231

 Tel: 1-631-559-9269 1-516-512-3133

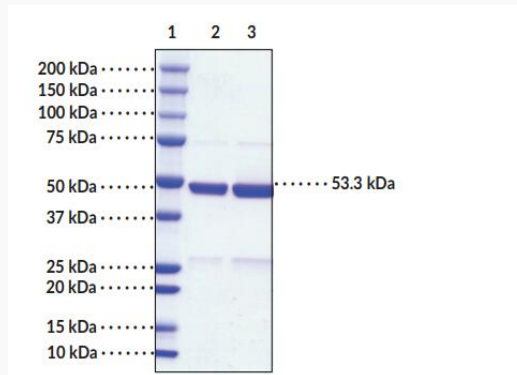
 Email: info@creative-biomart.com  Fax: 1-631-938-8127

 45-1 Ramsey Road, Shirley, NY 11967, USA

MIM 113705

UniProt ID P38398

**SDS-PAGE Analysis
of BRCA1 BRCT
domains.**



Lane 1: MW Markers

Lane 2: BRCA1 BRCT domains (2 μ g)

Lane 3: BRCA1 BRCT domains (4 μ g)

 Tel: 1-631-559-9269 1-516-512-3133

 Email: info@creative-biomart.com  Fax: 1-631-938-8127

 45-1 Ramsey Road, Shirley, NY 11967, USA