

## Recombinant Human BRCA1 protein, His-tagged

Cat. No. BRCA1-5256H Lot. No. (See product label)

### SPECIFICATION

<b>Product Overview</b>	Recombinant Human BRCA1 protein(P38398)(24-255aa), fused to N-terminal His tag, was expressed in E. coli.
<b>Species</b>	Human
<b>Source</b>	E.coli
<b>ProteinLength</b>	24-255aa
<b>Form</b>	If the delivery form is liquid, the default storage buffer is Tris/PBS-based buffer, 5%-50% glycerol. If the delivery form is lyophilized powder, the buffer before lyophilization is Tris/PBS-based buffer, 6% Trehalose, pH 8.0.
<b>Molecular Mass</b>	30.2 kDa
<b>Purity</b>	Greater than 90% as determined by SDS-PAGE.
<b>Storage</b>	Store at -20°C/-80°C upon receipt, aliquoting is necessary for multiple use. Avoid repeated freeze-thaw cycles.
<b>Reconstitution</b>	Please reconstitute protein in deionized sterile water to a concentration of 0.1-1.0 mg/mL. We recommend to add 5-50% of glycerol (final concentration) and aliquot for long-term storage at -20°C/-80°C. Our default final concentration of glycerol is 50%.

 Tel: 1-631-559-9269 1-516-512-3133

 Email: [info@creative-biomart.com](mailto:info@creative-biomart.com)  Fax: 1-631-938-8127

 45-1 Ramsey Road, Shirley, NY 11967, USA

## GENE INFORMATION

**Gene Name** BRCA1 breast cancer 1, early onset [ Homo sapiens ]

**Official Symbol** BRCA1

**Synonyms** BRCA1; breast cancer 1, early onset; breast cancer type 1 susceptibility protein; BRCA1/BRCA2 containing complex; subunit 1; BRCC1; PPP1R53; protein phosphatase 1; regulatory subunit 53; RNF53; RING finger protein 53; BRCA1/BRCA2-containing complex, subunit 1; protein phosphatase 1, regulatory subunit 53; breast and ovarian cancer susceptibility protein 1; breast and ovarian cancer susceptibility protein 1; IRIS; PSCP; BRCAI; PNCA4; BROVCA1;

**Gene ID** 672

**mRNA Refseq** NM\_007294

**Protein Refseq** NP\_009225

**MIM** 113705

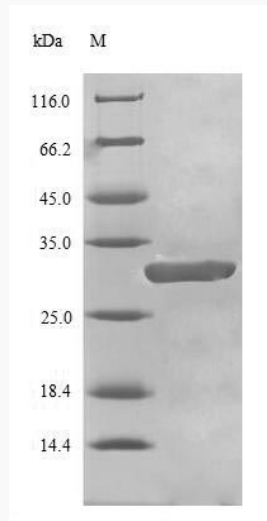
**UniProt ID** P38398

 Tel: 1-631-559-9269 1-516-512-3133

 Email: [info@creative-biomart.com](mailto:info@creative-biomart.com)  Fax: 1-631-938-8127

 45-1 Ramsey Road, Shirley, NY 11967, USA

**SDS-PAGE**



 Tel: 1-631-559-9269 1-516-512-3133

 Email: [info@creative-biomart.com](mailto:info@creative-biomart.com)  Fax: 1-631-938-8127

 45-1 Ramsey Road, Shirley, NY 11967, USA