

## Recombinant Human BRD3 protein, His&FLAG-tagged

Cat. No. BRD3-2839H Lot. No. (See product label)

### SPECIFICATION

<b>Product Overview</b>	Recombinant Human BRD3 protein(NM_007371.3)(306-416 aa) was expressed in E. coli and contains an N-terminal His-Tag and C-terminal FLAG-Tag.
<b>Species</b>	Human
<b>Source</b>	E.coli
<b>ProteinLength</b>	306-416 aa
<b>Form</b>	Supplied in 25 mM Tris pH 7.4, 150 mM NaCl, 5% glycerol.
<b>Bio-activity</b>	3.3 μM histone peptide H4K5/8/12/16 (4Ac) was incubated with BRD3 (306-416) protein in reaction buffer including 50mM HEPES-NaOH pH 7.0, 0.1% BSA for 1 hour at room temperature. Anti-Flag antibody was used to detect reaction products.
<b>Molecular Mass</b>	19.2 kDa
<b>Purity</b>	>70% pure by SDS-PAGE.
<b>Storage</b>	Recombinant proteins in solution are temperature sensitive and must be stored at -80°C to prevent degradation. Avoid repeated freeze/thaw cycles and keep on ice when not in storage.
<b>Reconstitution</b>	It is recommended that sterile water be added to the vial to prepare a stock solution of 0.2 ug/ul. Centrifuge the vial at 4°C before opening to recover the entire contents.

 Tel: 1-631-559-9269 1-516-512-3133

 Email: [info@creative-biomart.com](mailto:info@creative-biomart.com)  Fax: 1-631-938-8127

 45-1 Ramsey Road, Shirley, NY 11967, USA

## GENE INFORMATION

**Gene Name** BRD3 bromodomain containing 3 [ Homo sapiens ]

**Official Symbol** BRD3

**Synonyms** BRD3; bromodomain containing 3; bromodomain-containing protein 3; KIAA0043; ORFX; RING3 like; RING3L; RING3-like protein; bromodomain-containing 3; FLJ23227; FLJ41328;

**Gene ID** 8019

**mRNA Refseq** NM\_007371

**Protein Refseq** NP\_031397

**MIM** 601541

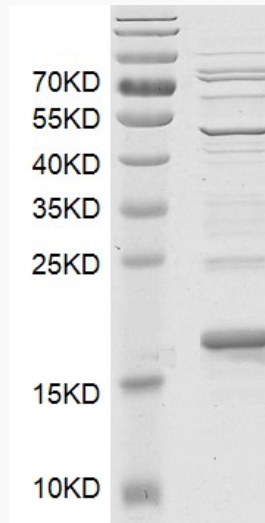
**UniProt ID** Q15059

 Tel: 1-631-559-9269 1-516-512-3133

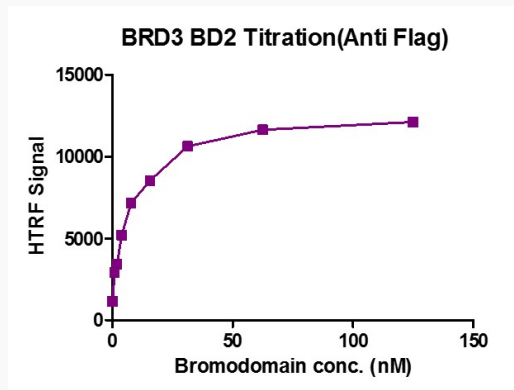
 Email: [info@creative-biomart.com](mailto:info@creative-biomart.com)  Fax: 1-631-938-8127

 45-1 Ramsey Road, Shirley, NY 11967, USA

**SDS-PAGE**



**Activity**



 Tel: 1-631-559-9269 1-516-512-3133

 Email: [info@creative-biomart.com](mailto:info@creative-biomart.com)  Fax: 1-631-938-8127

 45-1 Ramsey Road, Shirley, NY 11967, USA