

Recombinant Human BRD3 protein, GST-tagged

Cat. No. BRD3-2840H Lot. No. (See product label)

SPECIFICATION

Product Overview	Recombinant Human BRD3 protein(NP_031397.1)(306-416 aa) was expressed in E. coli and contains an N-terminal GST tag.
Species	Human
Source	E.coli
ProteinLength	306-416 aa
Form	Supplied in 25 mM Tris pH 8.0, 300 mM NaCl, 10% glycerol.
Bio-activity	1 μ M histone H4K5/8/12/16(ac4) peptide was incubated with different concentrations of BRD4 (44-168), GST-tag protein in a 10 μ l reaction system containing 50 mM HEPES-NaOH pH 7.4, 0.1% BSA for 1 hour, then 10 μ l GST antibody and SA-XL665 mixture (each 1:100 dilution in the reaction buffer) was added to each reaction system and incubated for 30 min. All the operations and reactions were performed at room temperature. HTRF assay was used for detection.
Molecular Mass	41.2 kDa
Purity	>90%
Storage	Recombinant proteins in solution are temperature sensitive and must be stored at -80°C to prevent degradation. Avoid repeated freeze/thaw cycles and keep on ice when not in storage.

 Tel: 1-631-559-9269 1-516-512-3133

 Email: info@creative-biomart.com  Fax: 1-631-938-8127

 45-1 Ramsey Road, Shirley, NY 11967, USA

Reconstitution It is recommended that sterile water be added to the vial to prepare a stock solution of 0.2 ug/ul. Centrifuge the vial at 4°C before opening to recover the entire contents.

GENE INFORMATION

Gene Name BRD3 bromodomain containing 3 [Homo sapiens]

Official Symbol BRD3

Synonyms BRD3; bromodomain containing 3; bromodomain-containing protein 3; KIAA0043; ORFX; RING3 like; RING3L; RING3-like protein; bromodomain-containing 3; FLJ23227; FLJ41328;

Gene ID 8019

mRNA Refseq NM_007371

Protein Refseq NP_031397

MIM 601541

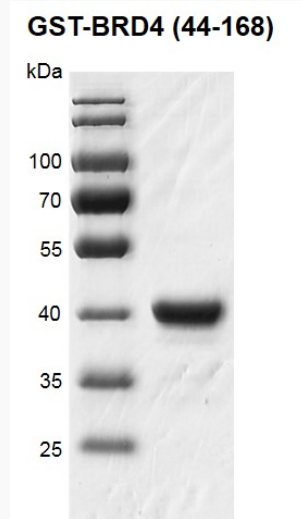
UniProt ID Q15059

 Tel: 1-631-559-9269 1-516-512-3133

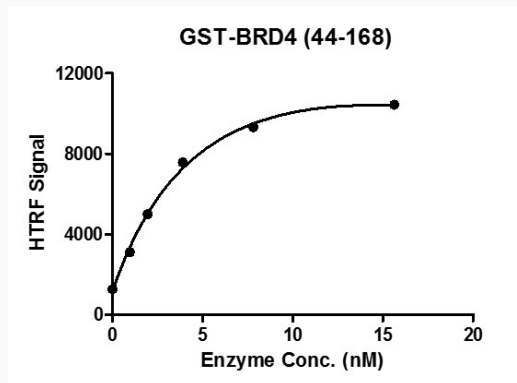
 Email: info@creative-biomart.com  Fax: 1-631-938-8127

 45-1 Ramsey Road, Shirley, NY 11967, USA

SDS-PAGE



Activity



 Tel: 1-631-559-9269 1-516-512-3133

 Email: info@creative-biomart.com  Fax: 1-631-938-8127

 45-1 Ramsey Road, Shirley, NY 11967, USA