

# Recombinant Human BRK1 Protein, Myc/DDK-tagged, C13 and N15-labeled

**Cat. No.** BRK1-1039H    **Lot. No.** (See product label)

## SPECIFICATION

<b>Product Overview</b>	C3orf10 MS Standard C13 and N15-labeled recombinant protein (NP_060932) with a C-terminal MYC/DDK tag, was expressed in HEK293 cells.
<b>Species</b>	Human
<b>Source</b>	HEK293
<b>Description</b>	BRK1 (BRICK1 Subunit Of SCAR/WAVE Actin Nucleating Complex) is a Protein Coding gene. Diseases associated with BRK1 include Cataract 40 and Spinocerebellar Ataxia, Autosomal Recessive 3. Among its related pathways are Signaling by GPCR and G-protein signaling RAC1 in cellular process. Gene Ontology (GO) annotations related to this gene include Rac GTPase binding.
<b>Molecular Mass</b>	8.7 kDa
<b>AA Sequence</b>	MAGQEDPVQREIHQDWANREYIEIITSSIKKIADFLNSFDMSCRSRLATLNEKLTALER RIEYIEARVTKGETLTTRTRPLEQKLISEEDLAANDILDYKDDDDKV
<b>Purity</b>	> 80% as determined by SDS-PAGE and Coomassie blue staining
<b>Stability</b>	Stable for 3 months from receipt of products under proper storage and handling conditions.
<b>Storage</b>	Store at -80 centigrade. Avoid repeated freeze-thaw cycles.

 Tel: 1-631-559-9269    1-516-512-3133

 Email: [info@creative-biomart.com](mailto:info@creative-biomart.com)     Fax: 1-631-938-8127

 45-1 Ramsey Road, Shirley, NY 11967, USA

**Concentration** 50 µg/mL as determined by BCA

**Storage Buffer** 100 mM glycine, 25 mM Tris-HCl, pH 7.3.

## GENE INFORMATION

**Gene Name** BRK1 BRICK1 subunit of SCAR/WAVE actin nucleating complex [ Homo sapiens (human) ]

**Official Symbol** BRK1

**Synonyms** BRK1; BRICK1, SCAR/WAVE actin-nucleating complex subunit; C3orf10, chromosome 3 open reading frame 10; protein BRICK1; BRICK1; SCAR/WAVE actin nucleating complex subunit; homolog (Arabidopsis thaliana); haematopoietic stem/progenitor cell protein 300; HSPC300; MDS027; probable protein BRICK1; BRICK1, SCAR/WAVE actin-nucleating complex subunit, homolog; hHBrk1; C3orf10;

**Gene ID** 55845

**mRNA Refseq** NM\_018462

**Protein Refseq** NP\_060932

**MIM** 611183

**UniProt ID** Q8WUW1

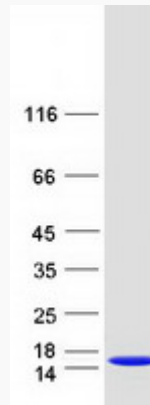
 Tel: 1-631-559-9269 1-516-512-3133

 Email: [info@creative-biomart.com](mailto:info@creative-biomart.com)  Fax: 1-631-938-8127

 45-1 Ramsey Road, Shirley, NY 11967, USA



SDS-PAGE



Tel: 1-631-559-9269 1-516-512-3133

Email: [info@creative-biomart.com](mailto:info@creative-biomart.com) Fax: 1-631-938-8127

45-1 Ramsey Road, Shirley, NY 11967, USA