

## Recombinant Human BRPF3 protein, His&FLAG-tagged

Cat. No. BRPF3-1715H Lot. No. (See product label)

### SPECIFICATION

<b>Product Overview</b>	Recombinant Human BRPF3 protein(accession number NM_015695.2)(576-701 aa) was expressed in E. coli and contains an N-terminal His-Tag and C-terminal FLAG-Tag.
<b>Species</b>	Human
<b>Source</b>	E.coli
<b>ProteinLength</b>	576-701 aa
<b>Form</b>	Supplied in 25 mM Tris pH 7.4, 150 mM NaCl, 5% glycerol.
<b>Bio-activity</b>	3.3 uM histone peptide H4K5/8/12/16(4Ac) was incubated with BRPF1 (576-701) protein in reaction buffer including 50mM HEPES-NaOH pH 7.0, 0.1% BSA overnight at room temperature. Anti-Flag antibody was used to detect reaction products.
<b>Molecular Mass</b>	19.7 kDa
<b>Purity</b>	>90% pure by SDS-PAGE.
<b>Storage</b>	Recombinant proteins in solution are temperature sensitive and must be stored at -80°C to prevent degradation. Avoid repeated freeze/thaw cycles and keep on ice when not in storage.
<b>Reconstitution</b>	It is recommended that sterile water be added to the vial to prepare a stock solution of

 Tel: 1-631-559-9269 1-516-512-3133

 Email: [info@creative-biomart.com](mailto:info@creative-biomart.com)  Fax: 1-631-938-8127

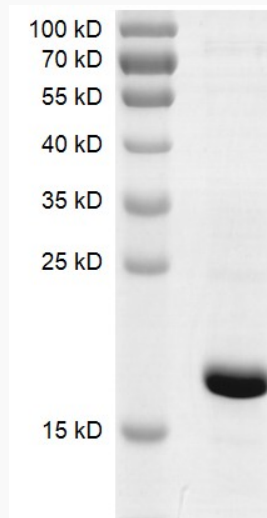
 45-1 Ramsey Road, Shirley, NY 11967, USA

0.2 ug/ul. Centrifuge the vial at 4°C before opening to recover the entire contents.

## GENE INFORMATION

<b>Gene Name</b>	BRPF3 bromodomain and PHD finger containing, 3 [ Homo sapiens ]
<b>Official Symbol</b>	BRPF3
<b>Synonyms</b>	BRPF3; bromodomain and PHD finger containing, 3; bromodomain and PHD finger-containing protein 3; KIAA1286;
<b>Gene ID</b>	27154
<b>mRNA Refseq</b>	NM_015695
<b>Protein Refseq</b>	NP_056510
<b>UniProt ID</b>	Q9ULD4

## SDS-PAGE

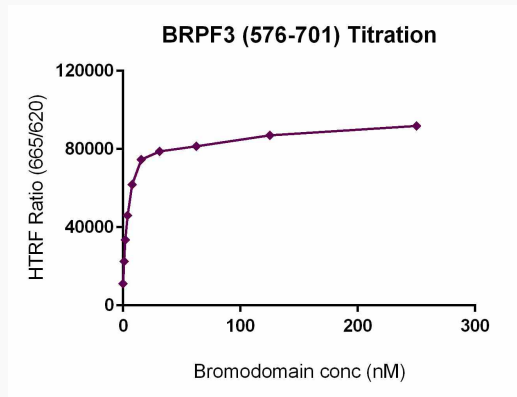


Tel: 1-631-559-9269 1-516-512-3133

Email: [info@creative-biomart.com](mailto:info@creative-biomart.com) Fax: 1-631-938-8127

45-1 Ramsey Road, Shirley, NY 11967, USA

Activity



 Tel: 1-631-559-9269 1-516-512-3133

 Email: [info@creative-biomart.com](mailto:info@creative-biomart.com)  Fax: 1-631-938-8127

 45-1 Ramsey Road, Shirley, NY 11967, USA