

Recombinant Human BRWD1 protein, His-tagged

Cat. No. BRWD1-4654H Lot. No. (See product label)

SPECIFICATION

Product Overview	Recombinant Human BRWD1 protein(1-120 aa), fused with N-terminal His tag, was expressed in E.coli.
Species	Human
Source	E.coli
ProteinLength	1-120 aa
Form	The purified protein was lyophilized from sterile phosphate-buffered saline (PBS: 58 mM Na ₂ HPO ₄ , 17 mM NaH ₂ PO ₄ , 68 mM NaCl, pH 7.4). Prior to lyophilization, 5% (w/v) trehalose and 5% (w/v) mannitol were incorporated as cryoprotective excipients. The protein was eluted with a buffer containing 300 mM imidazole.
AASequence	MAEPSSARRPVPLIESELYFLIARYLSAGPCRRAAQVLVQELEQYQLLPKRLDWEGN EHNRSYEELVLSNKHVAPDHLLQICQRIGPMLDKEIPPSISRVTSLLGAGRQSLLRTA KGTLI
Purity	85%, by SDS-PAGE with Coomassie Brilliant Blue staining.
Storage	Store at 2-8°C for 1-2 weeks. Aliquot and store at -20°C to -80°C for up to 3 months, reconstitution with sterile water and addition of an equal volume of glycerol. Avoid repeat freeze-thaw cycles.
Reconstitution	Dissolve the product in 200 µl sterile water to achieve a working concentration of 0.25

 Tel: 1-631-559-9269 1-516-512-3133

 Email: info@creative-biomart.com  Fax: 1-631-938-8127

 45-1 Ramsey Road, Shirley, NY 11967, USA

g/μl. If experimental compatibility allows, mix the aqueous solution with an equal volume of glycerol (1:1 ratio) after initial reconstitution.

GENE INFORMATION

Gene Name	BRWD1 bromodomain and WD repeat domain containing 1 [Homo sapiens]
Official Symbol	BRWD1
Synonyms	BRWD1; bromodomain and WD repeat domain containing 1; C21orf107, chromosome 21 open reading frame 107 , WD repeat domain 9 , WDR9; bromodomain and WD repeat-containing protein 1; FLJ11315; N143; transcriptional unit N143; WD repeat protein WDR9-form2; WD repeat-containing protein 9; WDR9; C21orf107; FLJ43918;
Gene ID	54014
mRNA Refseq	NM_001007246
Protein Refseq	NP_001007247
UniProt ID	Q9NSI6

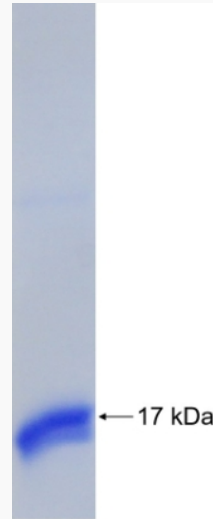
 Tel: 1-631-559-9269 1-516-512-3133

 Email: info@creative-biomart.com  Fax: 1-631-938-8127

 45-1 Ramsey Road, Shirley, NY 11967, USA



SDS-PAGE



☎ Tel: 1-631-559-9269 1-516-512-3133

☎ Email: info@creative-biomart.com ☎ Fax: 1-631-938-8127

☎ 45-1 Ramsey Road, Shirley, NY 11967, USA