

Recombinant Human BSDC1 Protein, Myc/DDK-tagged, C13 and N15-labeled

Cat. No. BSDC1-609H **Lot. No.** (See product label)

SPECIFICATION

Product Overview	BSDC1 MS Standard C13 and N15-labeled recombinant protein (NP_001137362) with a C-terminal MYC/DDK tag, was expressed in HEK293 cells.
Species	Human
Source	HEK293
Description	BSDC1 (BSD Domain Containing 1) is a Protein Coding gene. An important paralog of this gene is SYAP1.
Molecular Mass	37 kDa
AA Sequence	<p>MAEGEDVGWWRSWLQQSYQAVKEKARLYSLQSDPATYCNPDGPPPELFDWLSQ FCLEEKKGGEISELLVGSPSIRALYTKMVPAAVSHSEFWHRYFYK/HQLEQEQARRDA LKQRAEQSISEEPGWEEEEELMGISPISPKEAKVPVAKISTFPEGEPGPQSPCEEN LVTSVEPPAEVTPSESSESISLVTQIANPATAPEARVLPKDLSQKLLLEASLEEQGLAV DVGETGPPPIHSKPLTPAGHTGGPEPRPPARVETLREEAPTDLRVFELNSDSGKST PSNNGKKGSSDISEDWEKDFDLDMTEEEVQMALSKVDASGELEDVEWEDWETRT RPLEQKLISEEDLAANDILDYKDDDDKV</p>
Purity	> 80% as determined by SDS-PAGE and Coomassie blue staining
Stability	Stable for 3 months from receipt of products under proper storage and handling conditions.

 Tel: 1-631-559-9269 1-516-512-3133

 Email: info@creative-biomart.com  Fax: 1-631-938-8127

 45-1 Ramsey Road, Shirley, NY 11967, USA

Storage	Store at -80 centigrade. Avoid repeated freeze-thaw cycles.
----------------	---

Concentration	50 µg/mL as determined by BCA
----------------------	-------------------------------

Storage Buffer	100 mM glycine, 25 mM Tris-HCl, pH 7.3.
-----------------------	---

GENE INFORMATION

Gene Name	BSDC1 BSD domain containing 1 [Homo sapiens (human)]
------------------	--

Official Symbol	BSDC1
------------------------	-------

Synonyms	BSDC1; BSD domain containing 1; RP4-811H24.7; BSD domain-containing protein 1
-----------------	---

Gene ID	55108
----------------	-------

mRNA Refseq	NM_001143890
--------------------	--------------

Protein Refseq	NP_001137362
-----------------------	--------------

MIM	617518
------------	--------

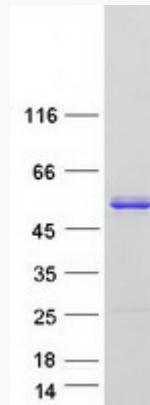
UniProt ID	Q9NW68
-------------------	--------

 Tel: 1-631-559-9269 1-516-512-3133

 Email: info@creative-biomart.com  Fax: 1-631-938-8127

 45-1 Ramsey Road, Shirley, NY 11967, USA

SDS-PAGE



 Tel: 1-631-559-9269 1-516-512-3133

 Email: info@creative-biomart.com  Fax: 1-631-938-8127

 45-1 Ramsey Road, Shirley, NY 11967, USA