

# Active Recombinant Human BSG Protein, Fc/His-tagged, Alexa Fluor® 647 conjugated

Cat. No. BSG-10H Lot. No. (See product label)

## SPECIFICATION

<b>Product Overview</b>	Recombinant human Alexa Fluor® 647 conjugated EMMPRIN/CD147 (Thr25-His205) protein with human IgG1 (Pro100-Lys330) Fc tag and His tag at C-terminus was expressed in mouse myeloma cell line.
<b>Species</b>	Human
<b>Source</b>	NS0
<b>ProteinLength</b>	25-205 a.a.
<b>Description</b>	The protein encoded by this gene, basigin, is a plasma membrane protein that is important in spermatogenesis, embryo implantation, neural network formation, and tumor progression. Basigin is also a member of the immunoglobulin superfamily, ubiquitously expressed in various tissues. Multiple transcript variants encoding different isoforms have been found for this gene.
<b>Form</b>	Disulfide-linked homodimer Labeled with Alexa Fluor® 647 Excitation Wavelength: 650 nm Emission Wavelength: 668 nm
<b>Bio-activity</b>	Measured by flow cytometry for its ability to bind anti-human EMMPRIN/CD147 Monoclonal Antibody conjugated beads. The concentration of Recombinant Human EMMPRIN/CD147 Fc Chimera Alexa Fluor® 647 that produces 50% of the binding

 Tel: 1-631-559-9269 1-516-512-3133

 Email: [info@creative-biomart.com](mailto:info@creative-biomart.com)  Fax: 1-631-938-8127

 45-1 Ramsey Road, Shirley, NY 11967, USA

	response is 0.25-5.00 ng/mL.
<b>Molecular Mass</b>	47 kDa
<b>N-terminal Sequence Analysis</b>	Thr25
<b>Endotoxin</b>	<1.0 EU/μg of the protein by the LAL method.
<b>Purity</b>	>90%, by SDS-PAGE visualized with Silver Staining and quantitative densitometry by Coomassie® Blue Staining.
<b>Storage</b>	Protect from light. Use a manual defrost freezer and avoid repeated freeze-thaw cycles. 6 months from date of receipt, -20 to -70 centigrade as supplied. 1 month, 2 to 8 centigrade under sterile conditions after opening. 3 months, -20 to -70 centigrade under sterile conditions after opening.
<b>Storage Buffer</b>	Supplied as a 0.2 μm filtered solution in PBS with BSA as a carrier protein.
<b>Shipping</b>	The product is shipped with dry ice or equivalent.
<b>Conjugation</b>	Alexa Fluor 647

## GENE INFORMATION

<b>Gene Name</b>	BSG basigin (Ok blood group) [ Homo sapiens (human) ]
<b>Official Symbol</b>	BSG
<b>Synonyms</b>	BSG; basigin (Ok blood group); OK; 5F7; TCSF; CD147; EMPRIN; HAb18G;

 Tel: 1-631-559-9269 1-516-512-3133

 Email: [info@creative-biomart.com](mailto:info@creative-biomart.com)  Fax: 1-631-938-8127

 45-1 Ramsey Road, Shirley, NY 11967, USA

EMMPRIN; basigin; OK blood group antigen; collagenase stimulatory factor; extracellular matrix metalloproteinase inducer; hepatoma-associated antigen; leukocyte activation antigen M6; tumor cell-derived collagenase stimulatory factor

**Gene ID** [682](#)

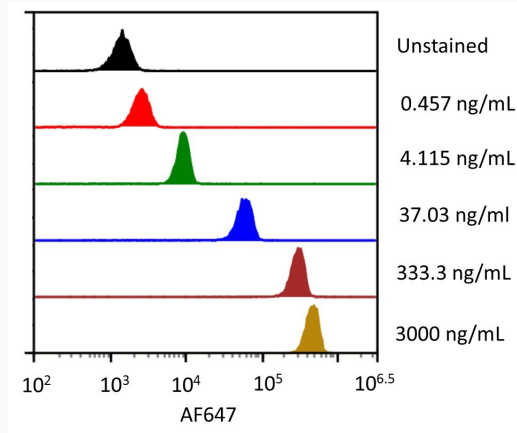
**mRNA Refseq** [NM\\_001322243](#)

**Protein Refseq** [NP\\_001309172](#)


**MIM** [109480](#)

**UniProt ID** [P35613](#)

**FC**

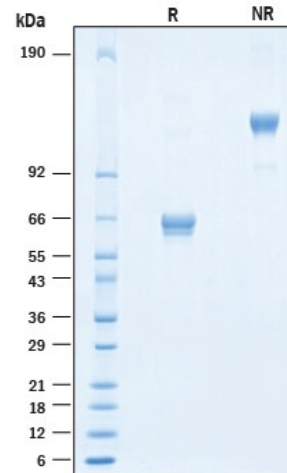


Streptavidin coated beads conjugated to biotinylated anti-human EMMPRIN/CD147 Monoclonal Antibody were stained with the indicated concentrations of Recombinant Human EMMPRIN/CD147 Fc Chimera Alexa Fluor® 647.

 Tel: 1-631-559-9269 1-516-512-3133

 Email: [info@creative-biomart.com](mailto:info@creative-biomart.com)  Fax: 1-631-938-8127

 45-1 Ramsey Road, Shirley, NY 11967, USA

**SDS-PAGE**

2 µg/lane of Recombinant Human EMMPRIN/CD147 Fc Chimera His-tag Alexa Fluor® 647 Protein was resolved with SDS-PAGE under reducing (R) and non-reducing (NR) conditions and visualized by Coomassie® Blue staining, showing bands at 56-69 kDa and 112-140 kDa, respectively.

 Tel: 1-631-559-9269 1-516-512-3133

 Email: [info@creative-biomart.com](mailto:info@creative-biomart.com)  Fax: 1-631-938-8127

 45-1 Ramsey Road, Shirley, NY 11967, USA