

Active Recombinant Human BSG Protein, His-tagged

Cat. No. BSG-151H Lot. No. (See product label)

SPECIFICATION

| | |
|-------------------------|---|
| Product Overview | Active Recombinant Human BSG Protein(NP_940991.1)(Ala22-His205) is expressed from HEK293 with His tag at the C-Terminus. |
| Species | Human |
| Source | HEK293 |
| ProteinLength | 22-205 aa |
| Form | Lyophilized from 0.22µm filtered solution in PBS (pH 7.4). |
| Bio-activity | Immobilized Human EMMPRIN, His Tag at 1 µg/ml (100µl/well) on the plate. Dose response curve for Anti-EMMPRIN Antibody, hFc Tag with the EC50 of 3.0ng/ml determined by ELISA. |
| Molecular Mass | The protein has a predicted MW of 21.2 kDa. Due to glycosylation, the protein migrates to 28-40 kDa based on Bis-Tris PAGE result. |
| Endotoxin | Less than 1 EU per µg by the LAL method. |
| Purity | > 95% as determined by Bis-Tris PAGE > 95% as determined by HPLC |
| Storage | -20 to -80°C for 12 months as supplied from date of receipt. -80°C for 3 months after reconstitution. Recommend to aliquot the protein into smaller quantities for optimal storage. Please minimize freeze-thaw cycles. |

 Tel: 1-631-559-9269 1-516-512-3133

 Email: info@creative-biomart.com  Fax: 1-631-938-8127

 45-1 Ramsey Road, Shirley, NY 11967, USA

Reconstitution Dissolve the lyophilized protein in distilled water.

GENE INFORMATION

Gene Name BSG basigin (Ok blood group) [Homo sapiens]

Official Symbol BSG

Synonyms BSG; basigin (Ok blood group); basigin (OK blood group) , OK; basigin; CD147; EMMPRIN; CD147 antigen; OK blood group antigen; collagenase stimulatory factor; leukocyte activation antigen M6; extracellular matrix metalloproteinase inducer; tumor cell-derived collagenase stimulatory factor; M6; OK; 5F7; TCSF;

Gene ID 682

mRNA Refseq NM_001728

Protein Refseq NP_001719

MIM 109480

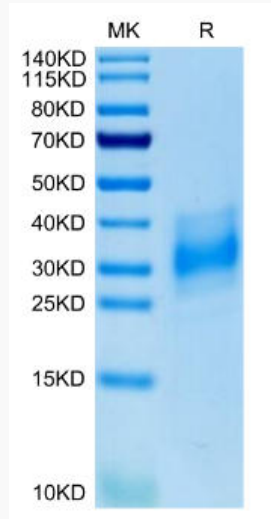
UniProt ID P35613

 Tel: 1-631-559-9269 1-516-512-3133

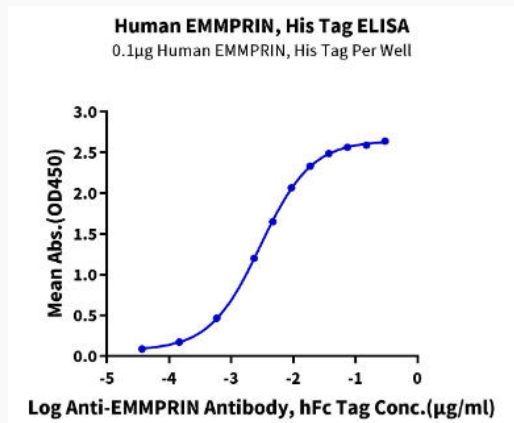
 Email: info@creative-biomart.com  Fax: 1-631-938-8127

 45-1 Ramsey Road, Shirley, NY 11967, USA

Bis-Tris PAGE



ELISA Data



 Tel: 1-631-559-9269 1-516-512-3133

 Email: info@creative-biomart.com  Fax: 1-631-938-8127

 45-1 Ramsey Road, Shirley, NY 11967, USA