

Recombinant Human BSG Protein, Myc/DDK-tagged, C13 and N15-labeled

Cat. No. BSG-3338H **Lot. No.** (See product label)

SPECIFICATION

Product Overview	BSG MS Standard C13 and N15-labeled recombinant protein (NP_940993) with a C-terminal MYC/DDK tag, was expressed in HEK293 cells.
Species	Human
Source	HEK293
Description	The protein encoded by this gene, basigin, is a plasma membrane protein that is important in spermatogenesis, embryo implantation, neural network formation, and tumor progression. Basigin is also a member of the immunoglobulin superfamily, ubiquitously expressed in various tissues. Multiple transcript variants encoding different isoforms have been found for this gene.
Molecular Mass	22.6 kDa
AA Sequence	MKQSDASPQERVDSDDQWGEYSCVFLPEPMGTANIQLHGPPRVKAVKSSEHINEG ETAMLVCKSESVPPVTDWAWYKITDSEDKALMNGSESRRFFVSSSQGRSELHIENLN MEADPGQYRCNGTSSKGSQAIITLVRSHLAALWPFLGIVAELVLTIIIFIYEKRRK PEDVLDDDDAGSAPLKSSGQHQNKGKKNVRQRNSSSGPTRTRRLEQKLISEEDLA ANDILDYKDDDDKV
Purity	> 80% as determined by SDS-PAGE and Coomassie blue staining
Stability	Stable for 3 months from receipt of products under proper storage and handling

 Tel: 1-631-559-9269 1-516-512-3133

 Email: info@creative-biomart.com  Fax: 1-631-938-8127

 45-1 Ramsey Road, Shirley, NY 11967, USA

conditions.

Storage Store at -80 centigrade. Avoid repeated freeze-thaw cycles.

Concentration 50 µg/mL as determined by BCA

Storage Buffer 100 mM glycine, 25 mM Tris-HCl, pH 7.3.

GENE INFORMATION

Gene Name [BSG basigin \(Ok blood group\) \[Homo sapiens \(human\) \]](#)

Official Symbol [BSG](#)

Synonyms BSG; basigin (Ok blood group); basigin (OK blood group), OK; basigin; CD147; EMMPRIN; CD147 antigen; OK blood group antigen; collagenase stimulatory factor; leukocyte activation antigen M6; extracellular matrix metalloproteinase inducer; tumor cell-derived collagenase stimulatory factor; M6; OK; 5F7; TCSF;

Gene ID [682](#)

mRNA Refseq [NM_198591](#)

Protein Refseq [NP_940993](#)

MIM [109480](#)

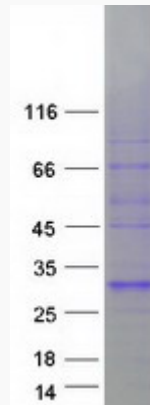
UniProt ID [P35613](#)

 Tel: 1-631-559-9269 1-516-512-3133

 Email: info@creative-biomart.com  Fax: 1-631-938-8127

 45-1 Ramsey Road, Shirley, NY 11967, USA

SDS-PAGE



 Tel: 1-631-559-9269 1-516-512-3133

 Email: info@creative-biomart.com  Fax: 1-631-938-8127

 45-1 Ramsey Road, Shirley, NY 11967, USA