

Recombinant Human BSG Protein(138-321aa), His-tagged

Cat. No. BSG-3874H Lot. No. (See product label)

SPECIFICATION

Product Overview	Recombinant Human BSG Protein(138-321aa)(P35613), fused with N-terminal His tag, was expressed in E. coli.
Species	Human
Source	E.coli
ProteinLength	138-321aa
Form	If the delivery form is liquid, the default storage buffer is Tris/PBS-based buffer, 5%-50% glycerol. If the delivery form is lyophilized powder, the buffer before lyophilization is Tris/PBS-based buffer, 6% Trehalose, pH 8.0.
Molecular Mass	24.2kDa
AA Sequence	EPGTVFTTVEDLGSKILLTCSLNSATEVTGHRWLKGGVVLKEDALPGQKTEFKVDS DDQWGEYSCVFLPEPMGTANIQLHGPPRVKAVKSSEHINEGETAMLVCKSESVPPV TDWAWYKITDSEDKALMNGSESRRFFVSSSQGRSELHIENLNMEADPGQYRCNGTS SKGSDQAIITLRVRS
Purity	Greater than 90% as determined by SDS-PAGE.
Storage	Store at -20°C/-80°C upon receipt, aliquoting is necessary for mutiple use. Avoid repeated freeze-thaw cycles.

 Tel: 1-631-559-9269 1-516-512-3133

 Email: info@creative-biomart.com  Fax: 1-631-938-8127

 45-1 Ramsey Road, Shirley, NY 11967, USA

Reconstitution It is recommended that sterile water be added to the vial to prepare a stock solution of 0.2 ug/ul. Centrifuge the vial at 4°C before opening to recover the entire contents.

GENE INFORMATION

Gene Name BSG basigin (Ok blood group) [Homo sapiens]

Official Symbol BSG

Synonyms BSG; basigin (Ok blood group); basigin (OK blood group) , OK; basigin; CD147; EMMPRIN; CD147 antigen; OK blood group antigen; collagenase stimulatory factor; leukocyte activation antigen M6; extracellular matrix metalloproteinase inducer; tumor cell-derived collagenase stimulatory factor; M6; OK; 5F7; TCSF;

Gene ID 682

mRNA Refseq NM_001728

Protein Refseq NP_001719

MIM 109480

UniProt ID P35613

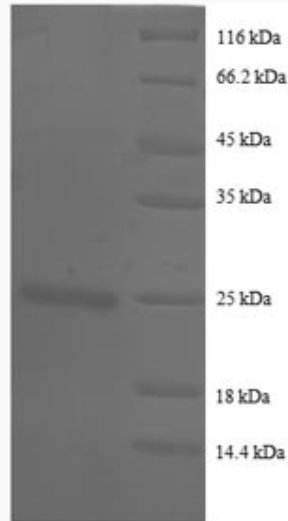
 Tel: 1-631-559-9269 1-516-512-3133

 Email: info@creative-biomart.com  Fax: 1-631-938-8127

 45-1 Ramsey Road, Shirley, NY 11967, USA



SDS-PAGE



Tel: 1-631-559-9269 1-516-512-3133

Email: info@creative-biomart.com Fax: 1-631-938-8127

45-1 Ramsey Road, Shirley, NY 11967, USA