

## Active Recombinant Human BSG protein

**Cat. No.** BSG-618H    **Lot. No.** (See product label)

### SPECIFICATION

<b>Product Overview</b>	Active Recombinant Human BSG protein(NP_940991.1)(Met 1-His 205) with quinary-aa peptide (DDDDK) at the C-terminus was expressed and purified in HEK293.
<b>Species</b>	Human
<b>Source</b>	HEK293
<b>ProteinLength</b>	1-205 aa
<b>Form</b>	Lyophilized from sterile 50mM Tris, 100mM NaCl, pH 8.0.
<b>Bio-activity</b>	Using the Octet RED System, the affinity constant (Kd) of human CD147 bound to Human PPIA-His was 0.3 $\mu$ M.
<b>Molecular Mass</b>	The recombinant mature human CD147 cytokine comprises 190 amino acids and has a predicted molecular mass of 20.7 kDa. As a result of glycosylation, the rhCD147 migrates as an approximately 35-38 kDa band in SDS-PAGE under reducing conditions.
<b>Endotoxin</b>	< 1.0 EU per $\mu$ g of the protein as determined by the LAL method.
<b>Purity</b>	> 97 % as determined by SDS-PAGE and SEC-HPLC Analysis.
<b>Storage</b>	Store it under sterile conditions at -20°C to -80°C upon receiving. Recommend to aliquot the protein into smaller quantities for optimal storage. Avoid repeated freeze-

 Tel: 1-631-559-9269    1-516-512-3133

 Email: [info@creative-biomart.com](mailto:info@creative-biomart.com)     Fax: 1-631-938-8127

 45-1 Ramsey Road, Shirley, NY 11967, USA

thaw cycles.

**Reconstitution**

It is recommended that sterile water be added to the vial to prepare a stock solution of 0.2 ug/ul. Centrifuge the vial at 4°C before opening to recover the entire contents.

## GENE INFORMATION

**Gene Name**                    [BSG basigin \(Ok blood group\) \[ Homo sapiens \]](#)

**Official Symbol**            [BSG](#)

**Synonyms**

BSG; basigin (Ok blood group); basigin (OK blood group) , OK; basigin; CD147; EMMPRIN; CD147 antigen; OK blood group antigen; collagenase stimulatory factor; leukocyte activation antigen M6; extracellular matrix metalloproteinase inducer; tumor cell-derived collagenase stimulatory factor; M6; OK; 5F7; TCSF;

**Gene ID**                        [682](#)

**mRNA Refseq**                [NM\\_001728](#)

**Protein Refseq**               [NP\\_001719](#)

**MIM**                             [109480](#)

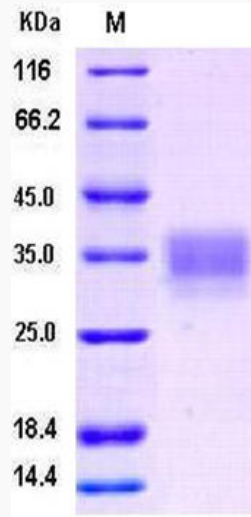
**UniProt ID**                    [P35613](#)

 Tel: 1-631-559-9269    1-516-512-3133

 Email: [info@creative-biomart.com](mailto:info@creative-biomart.com)     Fax: 1-631-938-8127

 45-1 Ramsey Road, Shirley, NY 11967, USA

SDS-PAGE



 Tel: 1-631-559-9269 1-516-512-3133

 Email: [info@creative-biomart.com](mailto:info@creative-biomart.com)  Fax: 1-631-938-8127

 45-1 Ramsey Road, Shirley, NY 11967, USA