

## Recombinant Human BST1 Protein, His-tagged

Cat. No. BST1-001H Lot. No. (See product label)

### SPECIFICATION

|                                     |  |
|-------------------------------------|--|
| <b>Product Overview</b>             | Recombinant human BST1, fused to His-tag at C-terminus, was expressed in insect cell and purified by using conventional chromatography techniques.   |
| <b>Species</b>                      | Human  |
| <b>Source</b>                       | Insect Cells   |
| <b>Description</b>                  | BST1, also known as ADP-ribosyl cyclase/cyclic ADP-ribose hydrolase 2, is a glycosylphosphatidyl inositol (GPI) anchored membrane protein that belongs to the CD38 family. It was originally identified as a bone marrow stromal cell molecule. This protein is an ectoenzyme sharing several characteristics with ADP-ribosyl cyclase CD38. Along with CD38, it exhibits both DP-ribosyl cyclase and cyclinc ADP ribose hydrolase activities. It may play a role in rheumatoid arthritis (RA) due to its enhanced expression in RA-derived bone marrow stromal cell lines. Also, it is expressed by cells of the myeloid lineage and could act as a receptor with signal transduction capability. |
| <b>Form</b>                         | Liquid   |
| <b>Molecular Mass</b>               | 30.5 kDa   |
| <b>N-terminal Sequence Analysis</b> | Arg 33   |
| <b>Endotoxin</b>                    | < 0.1 EU per 1µg of protein (determined by LAL method)   |

 Tel: 1-631-559-9269 1-516-512-3133

 Email: [info@creative-biomart.com](mailto:info@creative-biomart.com)  Fax: 1-631-938-8127

 45-1 Ramsey Road, Shirley, NY 11967, USA

|                       |   |
|-----------------------|---|
| <b>Purity</b>         | > 95% by SDS - PAGE   |
| <b>Storage</b>        | Can be stored at +4 centigrade short term (1-2 weeks). For long term storage, aliquot and store at -20 centigrade or -70 centigrade. Avoid repeated freezing and thawing cycles.  |
| <b>Concentration</b>  | 0.5 mg/mL (determined by Absorbance at 280nm)   |
| <b>Storage Buffer</b> | In Phosphate Buffered Saline (pH 7.4) containing 10% glycerol.  |
| <b>Warning</b>        | For research use only. This product is not intended or approved for human, diagnostics or veterin   |
| <b>AA Sequence</b>    | RWRGEGTSAHLRDIFLGRCAEYRALLSPEQRNKNCTAIWEAFKVALDKDPCSVLPS<br>DYDLFINLSRHSIPRDKSLFWENSHLLVNSFADNTRRFMPLSDVLYGRVADFLSWCR<br>QKNDSGLDYQSCPTSEDCENNPVDSFWKRASIYQSKDSSGVIHVMLNGSEPTGAY<br>PIKGGFFADYEIPNLQKEKITRIEIVVMHEIGGPNVESCGEKSMKVLEKRLKDMGFQYS<br>CINDYRPVKLLQCVDHSTHPDCALKSAAAATQRKAHHHHHHH |

## GENE INFORMATION

|                        |   |
|------------------------|---|
| <b>Gene Name</b>       | BST1 bone marrow stromal cell antigen 1 [ Homo sapiens (human) ]  |
| <b>Official Symbol</b> | BST1  |
| <b>Synonyms</b>        | BST1; bone marrow stromal cell antigen 1; CD157; ADP-ribosyl cyclase/cyclic ADP-ribose hydrolase 2; ADP-ribosyl cyclase 2; NAD(+) nucleosidase; bone marrow stromal antigen 1; bone marrow stromal cell antigen 1 variant 2; cADPr hydrolase 2; cyclic ADP-ribose hydrolase 2; EC 3.2.2.6 |
| <b>Gene ID</b>         | 683   |

 Tel: 1-631-559-9269 1-516-512-3133

 Email: [info@creative-biomart.com](mailto:info@creative-biomart.com)  Fax: 1-631-938-8127

 45-1 Ramsey Road, Shirley, NY 11967, USA

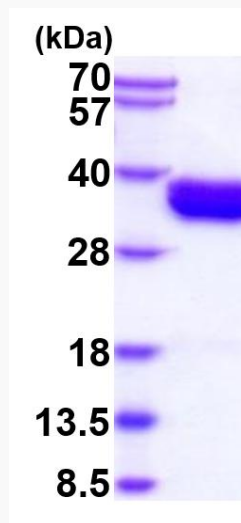
mRNA Refseq [NM\\_004334](#)

Protein Refseq [NP\\_004325](#)

MIM [600387](#)

UniProt ID [Q10588](#)

SDS-PAGE



15% SDS-PAGE (3  $\mu$ g)

 Tel: 1-631-559-9269 1-516-512-3133

 Email: [info@creative-biomart.com](mailto:info@creative-biomart.com)  Fax: 1-631-938-8127

 45-1 Ramsey Road, Shirley, NY 11967, USA