

Recombinant Human BST1 Protein, C-His-tagged

Cat. No. BST1-135H Lot. No. (See product label)

SPECIFICATION

Product Overview	Recombinant Human BST1 Protein with C-His tag was expressed in E. coli.
Species	Human
Source	E.coli
Description	BST1, synthesizes the second messengers cyclic ADP-ribose and nicotinate-adenine dinucleotide phosphate, the former a second messenger that elicits calcium release from intracellular stores. May be involved in pre-B-cell growth.
Molecular Mass	~29 kDa
AA Sequence	GARARWRGEGTSAHLRDIFLGRCAEYRALLSPEQRNKNCTAIWEAFKVALDKDPCS VLPSDYDLFINLSRHSIPRDKSLFWENSHLLVNSFADNTRRFMPLSDVLYGRVADFL SWCRQKNDGLDYQSCPTSEDCENNPVDSFWKRASIYQSKDSSGVIHVMLNGSEP TGAYPIKGGFFADYEIPNLQKEKITRIEIVVMHEIGGPNVESCGEKSMKVLEKRLKDMG FQYSCINDYRPVKLLQCVDHSTHPDCALKSAAAATQRKA
Purity	Transferred into competent cells and the supernatant was purified by NI column affinity chromatography and the purity is > 85% (by SDS-PAGE).
Notes	For research use only, not for use in diagnostic procedure.
Storage	Store at 4 centigrade short term. Aliquot and store at -20 centigrade long term. Avoid freeze-thaw cycles.

 Tel: 1-631-559-9269 1-516-512-3133

 Email: info@creative-biomart.com  Fax: 1-631-938-8127

 45-1 Ramsey Road, Shirley, NY 11967, USA

Concentration ≥0.5 mg/mL

Storage Buffer PBS, 4M Urea, pH7.4

GENE INFORMATION

Gene Name [BST1 bone marrow stromal cell antigen 1 \[Homo sapiens \(human\) \]](#)

Official Symbol [BST1](#)

Synonyms [BST1](#); bone marrow stromal cell antigen 1; ADP-ribosyl cyclase 2; ADP ribosyl cyclase 2; [CD157](#); NAD(+) nucleosidase; [BST-1](#); [cADPr hydrolase 2](#); bone marrow stromal antigen 1; cyclic ADP-ribose hydrolase 2;

Gene ID [683](#)

mRNA Refseq [NM_004334](#)

Protein Refseq [NP_004325](#)

MIM [600387](#)

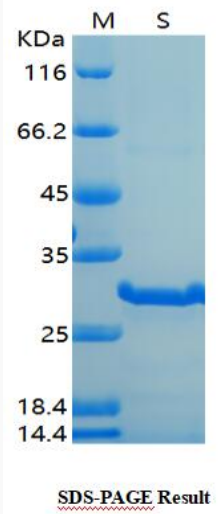
UniProt ID [Q10588](#)

 Tel: 1-631-559-9269 1-516-512-3133

 Email: info@creative-biomart.com  Fax: 1-631-938-8127

 45-1 Ramsey Road, Shirley, NY 11967, USA

SDS-PAGE



 Tel: 1-631-559-9269 1-516-512-3133

 Email: info@creative-biomart.com  Fax: 1-631-938-8127

 45-1 Ramsey Road, Shirley, NY 11967, USA