

Recombinant Human BST1 Protein (Met1-Lys292), C-His tagged

Cat. No. BST1-5121H Lot. No. (See product label)

SPECIFICATION

Product Overview	Recombinant human BST1 (Met1-Lys292) fused with the C-terminal His tag was expressed in Mammalian cells.
Species	Human
Source	Mammalian Cells
ProteinLength	Met1-Lys292
Form	Lyophilized powder/frozen liquid
Molecular Mass	32.12 kDa
Endotoxin	< 1.0 EU/μg of the protein as determined by the LAL method.
Purity	>90% as determined by SDS-PAGE.
Notes	For research use only.
Storage	Use a manual defrost freezer and avoid repeated freeze thaw cycles. Store at 2 to 8 centigrade for one week. Store at -20 to -80 centigrade for twelve months from the date of receipt.
Storage Buffer	Supplied as solution form in PBS or lyophilized from PBS.

 Tel: 1-631-559-9269 1-516-512-3133

 Email: info@creative-biomart.com  Fax: 1-631-938-8127

 45-1 Ramsey Road, Shirley, NY 11967, USA

Reconstitution Reconstitute in sterile water for a stock solution.

Shipping They are shipped out with dry ice/blue ice unless customers require otherwise.

GENE INFORMATION

Gene Name [BST1 bone marrow stromal cell antigen 1 \[Homo sapiens \(human\) \]](#)

Official Symbol [BST1](#)

Synonyms BST1; bone marrow stromal cell antigen 1; ADP-ribosyl cyclase 2; ADP ribosyl cyclase 2; CD157; NAD (+) nucleosidase; BST-1; cADPr hydrolase 2; bone marrow stromal antigen 1; cyclic ADP-ribose hydrolase 2;

Gene ID [683](#)

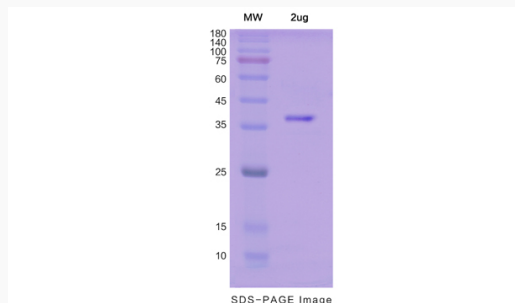
mRNA Refseq [NM_004334](#)

Protein Refseq [NP_004325](#)

MIM [600387](#)

UniProt ID [Q10588](#)

SDS-PAGE



 Tel: 1-631-559-9269 1-516-512-3133

 Email: info@creative-biomart.com  Fax: 1-631-938-8127

 45-1 Ramsey Road, Shirley, NY 11967, USA