

Recombinant Human BTC protein

Cat. No. BTC-21H Lot. No. (See product label)

SPECIFICATION

Product Overview	Recombinant Human BTC protein was expressed in Escherichia coli.
Species	Human
Source	E.coli
ProteinLength	80
Description	Betacellulin (BTC) is a member of the EGF family of cytokines that also includes EGF, TGF- α , Amphiregulin, HB-EGF, Epiregulin, Tomoregulin and the Neuregulins. It is expressed in most tissues including kidney, uterus, liver and pancreas. BTC also presents in body fluids, including serum, milk, and colostrum. At the amino acid sequence level, human mature BTC protein exhibits 80 % identity with mouse BTC protein. The protein binds to EGFR, ERBB4 and other EGF receptor family members and acts as a potent mitogen for retinal pigment epithelial cells and vascular smooth muscle cells.
Form	Lyophilized from a 0.2 μ m filtered concentrated solution in PBS, pH 7.4.
Bio-activity	Fully biologically active when compared to standard. The ED50 as determined by a cell proliferation assay using murine Balb/c 3T3 cells is less than 0.05 ng/ml, corresponding to a specific activity of > 2.0 \times 10 ⁷ IU/mg.
Molecular Mass	Recombinant human Betacellulin is a 9.0 kDa monomeric protein, containing 80 amino residues, which comprises the mature EGF homologous portion of the

 Tel: 1-631-559-9269 1-516-512-3133

 Email: info@creative-biomart.com  Fax: 1-631-938-8127

 45-1 Ramsey Road, Shirley, NY 11967, USA

	Betacellulin protein.
AA Sequence	DGNSTRSPETNGLLCGDPEENCAATTTQSKRKGHF SRCPKQYKHYCIKGR CRFVV AEQTPSCVCDEGYIGARCERVDLFY
Endotoxin	Less than 1 EU/g of rHuBTC as determined by LAL method.
Purity	>98% by SDS-PAGE and HPLC analysis.
Storage	Use a manual defrost freezer and avoid repeated freeze-thaw cycles. 12 months from date of receipt, -20 to -70 centigrade as supplied. 1 month, 2 to 8 centigrade under sterile conditions after reconstitution. 3 months, -20 to -70 centigrade under sterile conditions after reconstitution.
Reconstitution	We recommend that this vial be briefly centrifuged prior to opening to bring the contents to the bottom. Reconstitute in sterile distilled water or aqueous buffer containing 0.1 % BSA to a concentration of 0.1-1.0 mg/mL. Stock solutions should be apportioned into working aliquots and stored at ≤-20 centigrade. Further dilutions should be made in appropriate buffered solutions.

GENE INFORMATION

Gene Name	BTC
Official Symbol	BTC
Synonyms	BTC; betacellulin; probetacellulin;
Gene ID	685
mRNA Refseq	NM_001729

 Tel: 1-631-559-9269 1-516-512-3133

 Email: info@creative-biomart.com  Fax: 1-631-938-8127

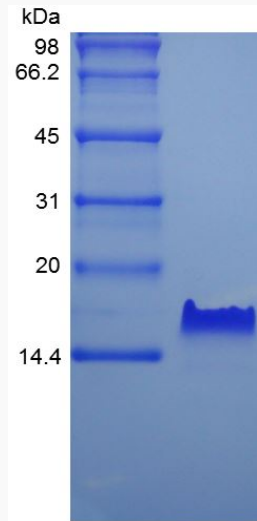
 45-1 Ramsey Road, Shirley, NY 11967, USA

Protein Refseq NP_001720

MIM 600345

UniProt ID P35070

SDS-PAGE of BTC-21H



 Tel: 1-631-559-9269 1-516-512-3133

 Email: info@creative-biomart.com  Fax: 1-631-938-8127

 45-1 Ramsey Road, Shirley, NY 11967, USA