

Recombinant Human BTF3L4 Protein, GST-tagged

Cat. No. BTF3L4-381H Lot. No. (See product label)

SPECIFICATION

Product Overview	Human BTF3L4 full-length ORF (NP_689478.1, 1 a.a. - 158 a.a.) recombinant protein with GST-tag at N-terminal.
Species	Human
Source	Wheat Germ
Form	50 mM Tris-HCl, 10 mM reduced Glutathione, pH=8.0 in the elution buffer.
Molecular Mass	43.7 kDa
AA Sequence	MNQEKLAKLQAQVRIGGKGTARRKKKVVHRTATADKKLQSSLKKLAVNNIAGIEEV NMIKDDGTVIHFNNPKVQASLSANTFAITGHAEAKPITEMLPGILSQLGADSLTSLRKL AEQFPRQVLDSKAPKPEDIDEEDDDVDPDLVENFDEASKNEAN
Quality Control Test	12.5% SDS-PAGE Stained with Coomassie Blue.
Storage	Store at -80 centigrade. Aliquot to avoid repeated freezing and thawing.
Storage Buffer	50 mM Tris-HCl, 10 mM reduced Glutathione, pH=8.0 in the elution buffer.

GENE INFORMATION

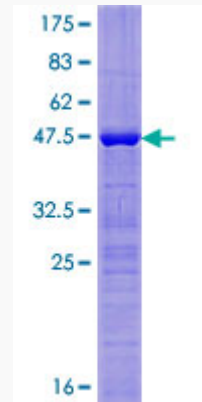
Gene Name	BTF3L4 basic transcription factor 3-like 4 [Homo sapiens]
------------------	---

 Tel: 1-631-559-9269 1-516-512-3133

 Email: info@creative-biomart.com  Fax: 1-631-938-8127

 45-1 Ramsey Road, Shirley, NY 11967, USA

Official Symbol	BTF3L4
Synonyms	BTF3L4; basic transcription factor 3-like 4; transcription factor BTF3 homolog 4; MGC23908; MGC88389;
Gene ID	91408
mRNA Refseq	NM_001136497
Protein Refseq	NP_001129969
UniProt ID	Q96K17



Tel: 1-631-559-9269 1-516-512-3133

Email: info@creative-biomart.com Fax: 1-631-938-8127

45-1 Ramsey Road, Shirley, NY 11967, USA