

Recombinant Human BTG1 Protein, GST-tagged

Cat. No. BTG1-382H **Lot. No.** (See product label)

SPECIFICATION

Product Overview	Human BTG1 full-length ORF (AAH16759, 1 a.a. - 171 a.a.) recombinant protein with GST-tag at N-terminal.
Species	Human
Source	Wheat Germ
Description	This gene is a member of an anti-proliferative gene family that regulates cell growth and differentiation. Expression of this gene is highest in the G0/G1 phases of the cell cycle and downregulated when cells progressed through G1. The encoded protein interacts with several nuclear receptors, and functions as a coactivator of cell differentiation. This locus has been shown to be involved in a t(8;12)(q24;q22) chromosomal translocation in a case of B-cell chronic lymphocytic leukemia.
Form	50 mM Tris-HCl, 10 mM reduced Glutathione, pH=8.0 in the elution buffer.
Molecular Mass	44.55 kDa
AA Sequence	MHPFYTRAATMIGEIAAAVSVFISKFLRTKGLTSERQLQTFSQSLQELLAEHYKHHWFP EKPKKGSYRCIRINHKMDPLIGQAAQRIGLSSQELFRLLPSELTLWDPYEVSYRIG EDGSICVLYEASPAGGSTQNSTNVQMVDSRISCKEELLGRTSPSKNYNMMTVSG
Quality Control Test	12.5% SDS-PAGE Stained with Coomassie Blue.
Storage	Store at -80 centigrade. Aliquot to avoid repeated freezing and thawing.

 Tel: 1-631-559-9269 1-516-512-3133

 Email: info@creative-biomart.com  Fax: 1-631-938-8127

 45-1 Ramsey Road, Shirley, NY 11967, USA

Storage Buffer 50 mM Tris-HCl, 10 mM reduced Glutathione, pH=8.0 in the elution buffer.

GENE INFORMATION

Gene Name BTG1 B-cell translocation gene 1, anti-proliferative [Homo sapiens]

Official Symbol BTG1

Synonyms BTG1; B-cell translocation gene 1, anti-proliferative; protein BTG1; B-cell translocation gene 1 protein;

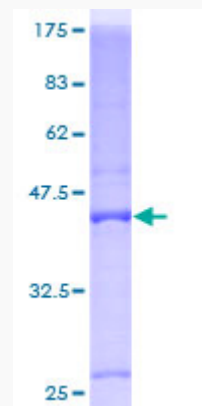
Gene ID 694

mRNA Refseq NM_001731

Protein Refseq NP_001722

MIM 109580

UniProt ID P62324



Tel: 1-631-559-9269 1-516-512-3133

Email: info@creative-biomart.com Fax: 1-631-938-8127

45-1 Ramsey Road, Shirley, NY 11967, USA