

Recombinant Human BTG2 protein, GST-tagged

Cat. No. BTG2-10320H Lot. No. (See product label)

SPECIFICATION

Product Overview	Recombinant Human BTG2 protein(1-50 aa), fused with N-terminal GST tag, was expressed in E.coli.
Species	Human
Source	E.coli
ProteinLength	1-50 aa
Form	The purified protein was lyophilized from sterile phosphate-buffered saline (PBS: 58 mM Na ₂ HPO ₄ , 17 mM NaH ₂ PO ₄ , 68 mM NaCl, pH 8.0). Prior to lyophilization, 5% (w/v) trehalose and 5% (w/v) mannitol were incorporated as cryoprotective excipients.
AASequence	MSHGKGT DMLPEIAAAVGFLLSLLRTRGCVSEQR LKVFSGALQEALTEHY
Purity	90%, by SDS-PAGE with Coomassie Brilliant Blue staining.
Storage	Store at 2-8°C for 1-2 weeks. Aliquot and store at -20°C to -80°C for up to 3 months, reconstitution with sterile water and addition of an equal volume of glycerol. Avoid repeat freeze-thaw cycles.
Reconstitution	Dissolve the product in 200 µl sterile water to achieve a working concentration of 0.25 g/µl. If experimental compatibility allows, mix the aqueous solution with an equal volume of glycerol (1:1 ratio) after initial reconstitution.

 Tel: 1-631-559-9269 1-516-512-3133

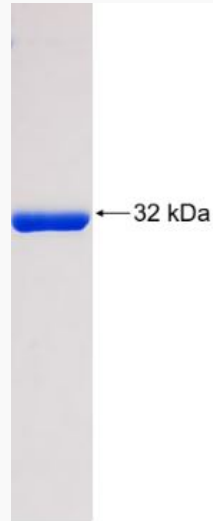
 Email: info@creative-biomart.com  Fax: 1-631-938-8127

 45-1 Ramsey Road, Shirley, NY 11967, USA

GENE INFORMATION**Gene Name** BTG2 BTG family, member 2 [Homo sapiens]**Official Symbol** BTG2**Synonyms** BTG2; BTG family, member 2; protein BTG2; B cell translocation gene 2; MGC126063; MGC126064; nerve growth factor inducible anti proliferative; NGF inducible anti proliferative protein PC3; PC3; pheochromacytoma cell 3; TIS21; pheochromacytoma cell-3; B-cell translocation gene 2; NGF-inducible anti-proliferative protein PC3; nerve growth factor-inducible anti-proliferative;**Gene ID** 7832**mRNA Refseq** NM_006763**Protein Refseq** NP_006754**MIM** 601597**UniProt ID** P78543 Tel: 1-631-559-9269 1-516-512-3133 Email: info@creative-biomart.com  Fax: 1-631-938-8127 45-1 Ramsey Road, Shirley, NY 11967, USA



SDS-PAGE



Tel: 1-631-559-9269 1-516-512-3133

Email: info@creative-biomart.com Fax: 1-631-938-8127

45-1 Ramsey Road, Shirley, NY 11967, USA