

## Recombinant Human BTG3 Protein, GST-tagged

**Cat. No.** BTG3-385H    **Lot. No.** (See product label)

### SPECIFICATION

<b>Product Overview</b>	Human BTG3 full-length ORF ( AAH11957, 1 a.a. - 296 a.a.) recombinant protein with GST-tag at N-terminal.
<b>Species</b>	Human
<b>Source</b>	Wheat Germ
<b>Description</b>	The protein encoded by this gene is a member of the BTG/Tob family. This family has structurally related proteins that appear to have antiproliferative properties. This encoded protein might play a role in neurogenesis in the central nervous system. Two transcript variants encoding different isoforms have been found for this gene.
<b>Form</b>	50 mM Tris-HCl, 10 mM reduced Glutathione, pH=8.0 in the elution buffer.
<b>Molecular Mass</b>	58.08 kDa
<b>AA Sequence</b>	MKNEIAAVVFFFTRLVRKHDKLKKEAVERFAEKLTLLQEKYKNHWYPEKPSKGQAY RCIRVNKFQRVDPDVLKACENSCILYSDLGLPKELTLWVDPCEVCCRRDGVSPCWP DCSQTPDLVIRPPWPPKALDYRREPLRPASSFLIMYGEKNNAFIVASFENKDENKDEI SRKVTRALDKVTSDYHSGSSSSDEETSKEMEVKPSVTAASPVYQISELIFPPLPM WHPLPRKKPGMYRGNQHNYPPPVPFGYPNQGRKNKPYRPTPTWVPPPGMH CDRNHWINPHMLAPH
<b>Quality Control Test</b>	12.5% SDS-PAGE Stained with Coomassie Blue.

 Tel: 1-631-559-9269    1-516-512-3133

 Email: [info@creative-biomart.com](mailto:info@creative-biomart.com)     Fax: 1-631-938-8127

 45-1 Ramsey Road, Shirley, NY 11967, USA

**Storage** Store at -80 centigrade. Aliquot to avoid repeated freezing and thawing.

**Storage Buffer** 50 mM Tris-HCl, 10 mM reduced Glutathione, pH=8.0 in the elution buffer.

## GENE INFORMATION

**Gene Name** BTG3 BTG family, member 3 [ Homo sapiens ]

**Official Symbol** BTG3

**Synonyms** BTG3; BTG family, member 3; protein BTG3; ANA; tob55; protein Tob5; B-cell translocation gene 3; abundant in neuroepithelium area protein; TOB5; TOFA; TOB55; MGC8928;

**Gene ID** 10950

**mRNA Refseq** NM\_001130914

**Protein Refseq** NP\_001124386

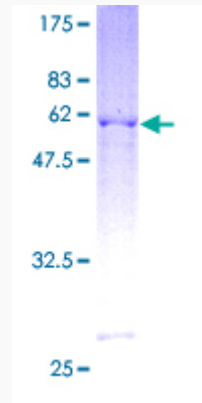
**MIM** 605674

**UniProt ID** Q14201

 Tel: 1-631-559-9269 1-516-512-3133

 Email: [info@creative-biomart.com](mailto:info@creative-biomart.com)  Fax: 1-631-938-8127

 45-1 Ramsey Road, Shirley, NY 11967, USA



 Tel: 1-631-559-9269 1-516-512-3133

 Email: [info@creative-biomart.com](mailto:info@creative-biomart.com)  Fax: 1-631-938-8127

 45-1 Ramsey Road, Shirley, NY 11967, USA