

Recombinant Human BTG4 Protein, GST-tagged

Cat. No. BTG4-386H **Lot. No.** (See product label)

SPECIFICATION

Product Overview	Human BTG4 full-length ORF (AAH31045, 1 a.a. - 206 a.a.) recombinant protein with GST-tag at N-terminal.
Species	Human
Source	Wheat Germ
Description	The protein encoded by this gene is a member of the BTG/Tob family. This family has structurally related proteins that appear to have antiproliferative properties. This encoded protein can induce G1 arrest in the cell cycle.
Form	50 mM Tris-HCl, 10 mM reduced Glutathione, pH=8.0 in the elution buffer.
Molecular Mass	48.4 kDa
AA Sequence	MRDEIATTVFFVTRLVKKHDKLSKQQIEDFAEKLMTILFETYRSHWHSDCPSKGGQAF RCIRINNNQNKDPILERACVESNVDFSHLGLPKEMTIWVDPFEVCCRYGKKNHPFTV ASFKGRWEEWELYQQISYAVSRASSDVSSGTSCDEESCSKEPRVIPKVSNPKSIYQ VKSVPVLFYTFFLSNSKKNALIMKTKKQKNMERTKL
Quality Control Test	12.5% SDS-PAGE Stained with Coomassie Blue.
Storage	Store at -80 centigrade. Aliquot to avoid repeated freezing and thawing.
Storage Buffer	50 mM Tris-HCl, 10 mM reduced Glutathione, pH=8.0 in the elution buffer.

 Tel: 1-631-559-9269 1-516-512-3133

 Email: info@creative-biomart.com  Fax: 1-631-938-8127

 45-1 Ramsey Road, Shirley, NY 11967, USA

GENE INFORMATION

Gene Name BTG4 B-cell translocation gene 4 [Homo sapiens]

Official Symbol BTG4

Synonyms BTG4; B-cell translocation gene 4; protein BTG4; PC3B; protein PC3b; BTG family member 4; MGC33003;

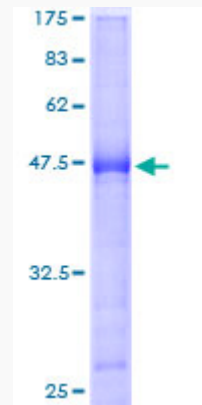
Gene ID 54766

mRNA Refseq NM_017589

Protein Refseq NP_060059

MIM 605673

UniProt ID Q9NY30



 Tel: 1-631-559-9269 1-516-512-3133

 Email: info@creative-biomart.com  Fax: 1-631-938-8127

 45-1 Ramsey Road, Shirley, NY 11967, USA