

Active Recombinant Human BTK protein, C-His-tagged

Cat. No. BTK-407H Lot. No. (See product label)

SPECIFICATION

Product Overview	Active Recombinant Human BTK protein(NP_000052.1) (Met 1-Ser 659) was expressed in Insect Cells with a C-terminal polyhistidine tag.
Species	Human
Source	Insect Cells
ProteinLength	1-659 aa
Form	Lyophilized from sterile 20 mM Tris, 500 mM NaCl, 10 % glycerol, pH 7.0.
Bio-activity	1. The specific activity was determined to be 115 nmol/min/mg using Poly(Glu,Tyr)4:1 peptide as substrate. 2. Measured by its ability to bind human BLNK in a functional ELISA.
Molecular Mass	The secreted recombinant human BTK consists of 670 amino acids and predicts a molecular mass of 77.8 KDa.
Endotoxin	< 1.0 EU per µg protein as determined by the LAL method.
Purity	> 85 % as determined by SDS-PAGE
Storage	Store it under sterile conditions at -20°C to -80°C upon receiving. Recommend to aliquot the protein into smaller quantities for optimal storage. Avoid repeated freeze-thaw cycles.

 Tel: 1-631-559-9269 1-516-512-3133

 Email: info@creative-biomart.com  Fax: 1-631-938-8127

 45-1 Ramsey Road, Shirley, NY 11967, USA

Reconstitution It is recommended that sterile water be added to the vial to prepare a stock solution of 0.2 ug/ul. Centrifuge the vial at 4°C before opening to recover the entire contents.

GENE INFORMATION

Gene Name [BTK Bruton agammaglobulinemia tyrosine kinase \[Homo sapiens \]](#)

Official Symbol [BTK](#)

Synonyms BTK; Bruton agammaglobulinemia tyrosine kinase; AGMX1, IMD1; tyrosine-protein kinase BTK; ATK; PSCTK1; XLA; B-cell progenitor kinase; agammaglobulinaemia tyrosine kinase; tyrosine-protein kinase BTK isoform (lacking exon 14); dominant-negative kinase-deficient Brutons tyrosine kinase; AT; BPK; IMD1; AGMX1; MGC126261; MGC126262;

Gene ID [695](#)

mRNA Refseq [NM_000061](#)

Protein Refseq [NP_000052](#)

MIM [300300](#)

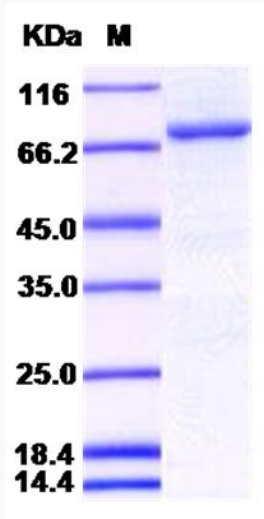
UniProt ID [Q06187](#)

 Tel: 1-631-559-9269 1-516-512-3133

 Email: info@creative-biomart.com  Fax: 1-631-938-8127

 45-1 Ramsey Road, Shirley, NY 11967, USA

SDS-PAGE



 Tel: 1-631-559-9269 1-516-512-3133

 Email: info@creative-biomart.com  Fax: 1-631-938-8127

 45-1 Ramsey Road, Shirley, NY 11967, USA