

Recombinant Full Length Human BTK Protein, C-Flag-tagged

Cat. No. BTK-985HFL Lot. No. (See product label)

SPECIFICATION

Product Overview	Recombinant Full Length Human BTK Protein, fused to Flag-tag at C-terminus, was expressed in Mammalian cells.
Species	Human
Source	Mammalian Cells
Description	The protein encoded by this gene plays a crucial role in B-cell development. Mutations in this gene cause X-linked agammaglobulinemia type 1, which is an immunodeficiency characterized by the failure to produce mature B lymphocytes, and associated with a failure of Ig heavy chain rearrangement. Alternative splicing results in multiple transcript variants encoding different isoforms.
Form	25 mM Tris HCl, pH 7.3, 100 mM glycine, 10% glycerol.
Molecular Mass	76.1 kDa
AA Sequence	<p>MAAVILESIFLKRSQQKKKTSPNFKKRLFLLTVHKLSYYEYDFERGRRGSKKGSIDV EKITCVETVPE KNPPPERQIPRRGEESEMEQISIIERFPYPFQVVYDEGPLYVFSF TEELRKRWIHQLKNVIRYNSDLVQ KYHPCFWIDGQYLCCSQTAKNAMGCQILENRN GSLKPGSSHRKTKKPLPPTPEEDQILKKPLPEPAAAP VSTSELKKVVALYDYMPMN ANDLQLRKGDEYFILEESNLPWWRARDKNGQEGYIPSNYVTEAEDSIEMYE WYSK HMTRSQAELLLKQEGKEGGFIVRDSSKAGKYTVSVFAKSTGDPQG VIRHYVVCSTP QSQYYLAEKH LFSTIPELINYHQHNSAGLISRLKYPVSQQNKNAPSTAGLGYGSWEI DPKDLTFLKELGTGQFGVVKY GK WRGQYDVAIKMIKEGSMSEDEFIEEAKVMMNLS</p>

 Tel: 1-631-559-9269 1-516-512-3133

 Email: info@creative-biomart.com  Fax: 1-631-938-8127

 45-1 Ramsey Road, Shirley, NY 11967, USA

HEKLVQLYGVCTKQRPIFIITEYMANGCLLNLYREMR HRFQTQQLLEMCKDVCEAM
 EYLESKQFLHRDLAARNCLVNDQGQVVKVSDFGLSRYVLDDEYTSSVGSKFP VRWS
 PPEVLMYSKFSSKSDIWAFGLMWEIYSLGKMPYERFTNSETAEHIAQGLRLYRPHL
 ASEKVYTIM
 YSCWHEKADERPTFKILLSNILDVMDEESTRTRPLEQKLISEEDLAANDILDYKDDDD
 KV

Purity	> 80% as determined by SDS-PAGE and Coomassie blue staining.
Stability	Stable for 12 months from the date of receipt of the product under proper storage and handling conditions. Avoid repeated freeze-thaw cycles.
Storage	Store at -80 centigrade.
Concentration	>50 ug/mL as determined by microplate BCA method.
Preparation	Recombinant protein was captured through anti-DDK affinity column followed by conventional chromatography steps.
Protein Families	Druggable Genome, Protein Kinase
Protein Pathways	B cell receptor signaling pathway, Fc epsilon RI signaling pathway, Primary immunodeficiency
Full Length	Full L.

GENE INFORMATION

Gene Name	BTK Bruton tyrosine kinase [Homo sapiens (human)]
Official Symbol	BTK

 Tel: 1-631-559-9269 1-516-512-3133

 Email: info@creative-biomart.com  Fax: 1-631-938-8127

 45-1 Ramsey Road, Shirley, NY 11967, USA

Synonyms AT; ATK; BPK; XLA; IMD1; AGMX1; IGHD3; PSCTK1

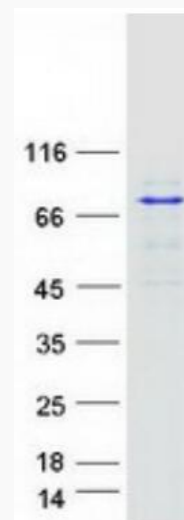
Gene ID 695

mRNA Refseq NM_000061.3

Protein Refseq NP_000052.1

MIM 300300

UniProt ID Q06187



Coomassie blue staining of purified BTK protein.

 Tel: 1-631-559-9269 1-516-512-3133

 Email: info@creative-biomart.com  Fax: 1-631-938-8127

 45-1 Ramsey Road, Shirley, NY 11967, USA