

## Recombinant Human BTLA Protein (Lys31-Leu150), C-Fc tagged

Cat. No. BTLA-0926H    Lot. No. (See product label)

### SPECIFICATION

<b>Product Overview</b>	Recombinant human BTLA (Lys31-Leu150) fused with the C-terminal Fc Tag was expressed in Mammalian cells.
<b>Species</b>	Human
<b>Source</b>	Mammalian Cells
<b>ProteinLength</b>	Lys31-Leu150
<b>Form</b>	Lyophilized powder/frozen liquid
<b>Molecular Mass</b>	38.2 kDa
<b>Purity</b>	>90% as determined by SDS-PAGE.
<b>Notes</b>	For research use only.
<b>Storage</b>	Use a manual defrost freezer and avoid repeated freeze thaw cycles. Store at 2 to 8 centigrade for one week. Store at -20 to -80 centigrade for twelve months from the date of receipt.
<b>Storage Buffer</b>	Supplied as solution form in PBS or lyophilized from PBS.
<b>Reconstitution</b>	Reconstitute in sterile water for a stock solution.

 Tel: 1-631-559-9269    1-516-512-3133

 Email: [info@creative-biomart.com](mailto:info@creative-biomart.com)     Fax: 1-631-938-8127

 45-1 Ramsey Road, Shirley, NY 11967, USA

**Shipping** They are shipped out with dry ice/blue ice unless customers require otherwise.

## GENE INFORMATION

**Gene Name** [BTLA B and T lymphocyte associated \[ Homo sapiens \(human\) \]](#)

**Official Symbol** [BTLA](#)

**Synonyms** BTLA; B and T lymphocyte associated; B- and T-lymphocyte attenuator; BTLA1; CD272; B and T lymphocyte attenuator; B- and T-lymphocyte-associated protein; FLJ16065; MGC129743;

**Gene ID** [151888](#)

**mRNA Refseq** [NM\\_001085357](#)

**Protein Refseq** [NP\\_001078826](#)

**MIM** [607925](#)

**UniProt ID** [Q7Z6A9](#)

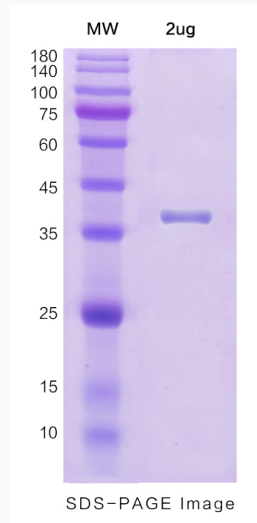
 Tel: 1-631-559-9269 1-516-512-3133

 Email: [info@creative-biomart.com](mailto:info@creative-biomart.com)  Fax: 1-631-938-8127

 45-1 Ramsey Road, Shirley, NY 11967, USA



SDS-PAGE



Tel: 1-631-559-9269 1-516-512-3133

Email: [info@creative-biomart.com](mailto:info@creative-biomart.com) Fax: 1-631-938-8127

45-1 Ramsey Road, Shirley, NY 11967, USA