

## Recombinant Human BTLA(isoform1) protein, His-tagged

Cat. No. BTLA-190H Lot. No. (See product label)

### SPECIFICATION

<b>Product Overview</b>	Recombinant Human BTLA(isoform1) protein(NM_181780.4) (Mer1-Ser150) was expressed in HEK293 with a polyhistidine tag at the C-terminus.
<b>Species</b>	Human
<b>Source</b>	HEK293
<b>ProteinLength</b>	1-150 aa
<b>Form</b>	Lyophilized from sterile PBS, pH 7.4.
<b>Bio-activity</b>	Immobilized Recombinant Human BTLA Protein (isoform1, His Tag) at 2 µg/mL (100 µL/well) can bind Recombinant Human HVEM / TNFRSF14 Protein (Fc Tag), the EC50 is 15-45 ng/mL.
<b>Molecular Mass</b>	The recombinant Human BTLA consists of 131 amino acids and predicts a molecular mass of 15.19 kDa. It migrates as an approximately 30.0 kDa band in SDS-PAGE under reducing conditions.
<b>Endotoxin</b>	< 1.0 EU per µg protein as determined by the LAL method.
<b>Purity</b>	≥ 95 % as determined by SDS-PAGE. ≥ 95 % as determined by SEC-HPLC.
<b>Storage</b>	Samples are stable for up to twelve months from date of receipt at -20°C to -80°C. Store it under sterile conditions at -20°C to -80°C. It is recommended that the protein

 Tel: 1-631-559-9269 1-516-512-3133

 Email: [info@creative-biomart.com](mailto:info@creative-biomart.com)  Fax: 1-631-938-8127

 45-1 Ramsey Road, Shirley, NY 11967, USA

be aliquoted for optimal storage. Avoid repeated freeze-thaw cycles.

**Reconstitution**

It is recommended that sterile water be added to the vial to prepare a stock solution of 0.2 ug/ul. Centrifuge the vial at 4°C before opening to recover the entire contents.

## GENE INFORMATION

**Gene Name** [BTLA B and T lymphocyte associated \[ Homo sapiens \]](#)

**Official Symbol** [BTLA](#)

**Synonyms** BTLA; B and T lymphocyte associated; B- and T-lymphocyte attenuator; BTLA1; CD272; B and T lymphocyte attenuator; B- and T-lymphocyte-associated protein; FLJ16065; MGC129743;

**Gene ID** [151888](#)

**mRNA Refseq** [NM\\_001085357](#)

**Protein Refseq** [NP\\_001078826](#)

**MIM** [607925](#)

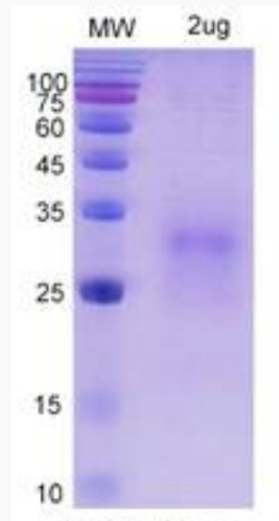
**UniProt ID** [Q7Z6A9](#)

 Tel: 1-631-559-9269 1-516-512-3133

 Email: [info@creative-biomart.com](mailto:info@creative-biomart.com)  Fax: 1-631-938-8127

 45-1 Ramsey Road, Shirley, NY 11967, USA

SDS-PAGE



 Tel: 1-631-559-9269 1-516-512-3133

 Email: [info@creative-biomart.com](mailto:info@creative-biomart.com)  Fax: 1-631-938-8127

 45-1 Ramsey Road, Shirley, NY 11967, USA