

## Recombinant Human BTLA protein, Fc-tagged

**Cat. No.** BTLA-192H    **Lot. No.** (See product label)

### SPECIFICATION

<b>Product Overview</b>	Recombinant Human BTLA (Lys31-Thr134) protein was fused to human IgG1 Fc tag at C-terminus and expressed in human 293 cells (HEK293).
<b>Species</b>	Human
<b>Source</b>	HEK293
<b>ProteinLength</b>	Lys31-Thr134
<b>Description</b>	B- and T-lymphocyte attenuator (BTLA) is also known as B- and T-lymphocyte-associated protein, CD antigen CD272. BTLA contains one Ig-like V-type (immunoglobulin-like) domain. As a lymphocyte inhibitory receptor, BTLA/CD272 inhibits lymphocytes during immune response. BTLA/CD272 can interact with tyrosine phosphatases PTPN6/SHP-1 and PTPN11/SHP-2, and interact with TNFRSF14/HVEM.
<b>Predicted N Terminal</b>	Lys31
<b>Form</b>	Lyophilized from 0.22 µm filtered solution in Tris with Glycine, Arginine and NaCl, pH7.5, 10% trehalose.
<b>Molecular Mass</b>	The protein has a calculated MW of 38.7 kDa. The protein migrates as 45-50 kDa under reducing (R) condition (SDS-PAGE) due to glycosylation.
<b>Endotoxin</b>	Less than 1.0 EU per µg by the LAL method.

 Tel: 1-631-559-9269    1-516-512-3133

 Email: [info@creative-biomart.com](mailto:info@creative-biomart.com)     Fax: 1-631-938-8127

 45-1 Ramsey Road, Shirley, NY 11967, USA

<b>Purity</b>	>92% as determined by SDS-PAGE.
<b>Storage</b>	<p>For long term storage, the product should be stored at lyophilized state at -20 centigrade or lower.</p> <p>Please avoid repeated freeze-thaw cycles.</p> <p>This product is stable after storage at:</p> <p>-20 to -70 centigrade for 12 months in lyophilized state;</p> <p>-70 centigrade for 3 months under sterile conditions after reconstitution.</p>
<b>Reconstitution</b>	It is recommended that sterile water be added to the vial to prepare a stock solution of 0.2 ug/ul. Centrifuge the vial at 4°C before opening to recover the entire contents.

## GENE INFORMATION

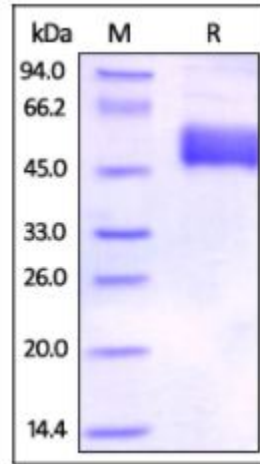
<b>Gene Name</b>	<a href="#">BTLA</a>
<b>Official Symbol</b>	<a href="#">BTLA</a>
<b>Synonyms</b>	BTLA; B and T lymphocyte associated; B- and T-lymphocyte attenuator; BTLA1; CD272; B and T lymphocyte attenuator; B- and T-lymphocyte-associated protein; FLJ16065; MGC129743
<b>Gene ID</b>	<a href="#">151888</a>
<b>mRNA Refseq</b>	<a href="#">NM_001085357</a>
<b>Protein Refseq</b>	<a href="#">NP_001078826</a>
<b>MIM</b>	<a href="#">607925</a>
<b>UniProt ID</b>	<a href="#">Q7Z6A9</a>

 Tel: 1-631-559-9269 1-516-512-3133

 Email: [info@creative-biomart.com](mailto:info@creative-biomart.com)  Fax: 1-631-938-8127

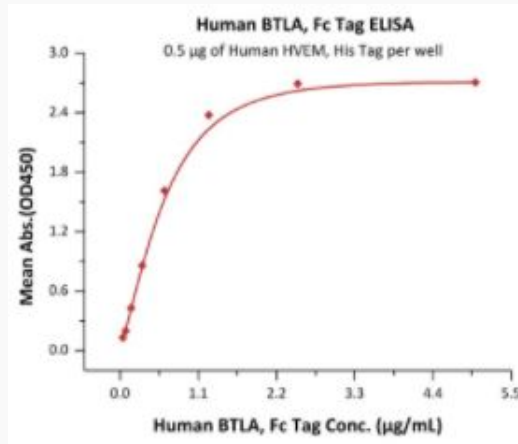
 45-1 Ramsey Road, Shirley, NY 11967, USA

**SDS-PAGE of BTLA-192H**



Human BTLA, Fc Tag on SDS-PAGE under reducing (R) condition. The gel was stained overnight with Coomassie Blue. The purity of the protein is greater than 92%.

**Bioactivity-ELISA of BTLA-192H**



Immobilized Human HVEM, His Tag at 5 µg/mL (100 µL/well) can bind Human BTLA, Fc Tag with a linear range of 0.02-1.25 µg/mL (QC tested).

Tel: 1-631-559-9269 1-516-512-3133

Email: [info@creative-biomart.com](mailto:info@creative-biomart.com) Fax: 1-631-938-8127

45-1 Ramsey Road, Shirley, NY 11967, USA