

## Recombinant Human BTLA protein, His-tagged

Cat. No. BTLA-348H Lot. No. (See product label)

### SPECIFICATION

|                         |  |
|-------------------------|--|
| <b>Product Overview</b> | Recombinant Human BTLA protein (Lys31-Ser150), fused to His tag at C-terminus, was expressed in human 293 cells (HEK293).  |
| <b>Species</b>          | Human  |
| <b>Source</b>           | HEK293   |
| <b>ProteinLength</b>    | 120  |
| <b>Description</b>      | B- and T-lymphocyte attenuator (BTLA) is also known as B- and T-lymphocyte-associated protein, CD antigen CD272. BTLA contains one Ig-like V-type (immunoglobulin-like) domain. As a lymphocyte inhibitory receptor, BTLA/CD272 inhibits lymphocytes during immune response. BTLA/CD272 can interact with tyrosine phosphatases PTPN6/SHP-1 and PTPN11/SHP-2, and interact with TNFRSF14/HVEM. |
| <b>Form</b>             | Lyophilized from 0.22 um filtered solution in PBS, pH7.4, 10% trehalose.   |
| <b>Molecular Mass</b>   | The protein has a calculated MW of 15.6 kDa. The protein migrates as 25-40 kDa under reducing (R) condition (SDS-PAGE) due to glycosylation.   |
| <b>Endotoxin</b>        | Less than 1.0 EU per ug by the LAL method.   |
| <b>Purity</b>           | >90% as determined by SDS-PAGE.  |

 Tel: 1-631-559-9269 1-516-512-3133

 Email: [info@creative-biomart.com](mailto:info@creative-biomart.com)  Fax: 1-631-938-8127

 45-1 Ramsey Road, Shirley, NY 11967, USA

**Storage**

For long term storage, the product should be stored at lyophilized state at -20 centigrade or lower.

Please avoid repeated freeze-thaw cycles.

This product is stable after storage at:

- 20 centigrade to -70 centigrade for 12 months in lyophilized state;
- 70 centigrade for 3 months under sterile conditions after reconstitution.

**Reconstitution**

It is recommended that sterile water be added to the vial to prepare a stock solution of 0.2 ug/ul. Centrifuge the vial at 4°C before opening to recover the entire contents.

## GENE INFORMATION

**Gene Name** [BTLA](#)

**Official Symbol** [BTLA](#)

**Synonyms** BTLA; B and T lymphocyte associated; B- and T-lymphocyte attenuator; BTLA1; CD272; B and T lymphocyte attenuator; B- and T-lymphocyte-associated protein; FLJ16065; MGC129743

**Gene ID** [151888](#)

**mRNA Refseq** [NM\\_001085357](#)

**Protein Refseq** [NP\\_001078826](#)

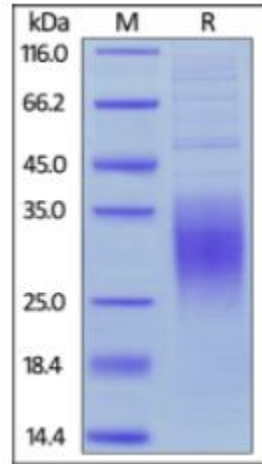
**MIM** [607925](#)

**UniProt ID** [Q7Z6A9](#)

 Tel: 1-631-559-9269 1-516-512-3133

 Email: [info@creative-biomart.com](mailto:info@creative-biomart.com)  Fax: 1-631-938-8127

 45-1 Ramsey Road, Shirley, NY 11967, USA

**SDS-PAGE of BTLA-348H**

Human BTLA, His Tag on SDS-PAGE under reducing (R) condition. The gel was stained overnight with Coomassie Blue. The purity of the protein is greater than 90%.

 Tel: 1-631-559-9269 1-516-512-3133

 Email: [info@creative-biomart.com](mailto:info@creative-biomart.com)  Fax: 1-631-938-8127

 45-1 Ramsey Road, Shirley, NY 11967, USA