

## Recombinant Human BTLA Protein, GST-tagged

Cat. No. BTLA-389H    Lot. No. (See product label)

### SPECIFICATION

<b>Product Overview</b>	Human BTLA partial ORF ( NP_861445, 190 a.a. - 289 a.a.) recombinant protein with GST-tag at N-terminal.
<b>Species</b>	Human
<b>Source</b>	Wheat Germ
<b>ProteinLength</b>	190-289 aa
<b>Description</b>	BTLA expression is induced during activation of T cells, and BTLA remains expressed on Th1 cells but not Th2 cells. Like PD1 (MIM 600244) and CTLA4 (MIM 123890), BTLA interacts with a B7 homolog, B7H4.
<b>Form</b>	50 mM Tris-HCl, 10 mM reduced Glutathione, pH=8.0 in the elution buffer.
<b>Molecular Mass</b>	36.74 kDa
<b>AA Sequence</b>	DTAGREINLVDAHLKSEQTEASTRQNSQVLLSETGIYDNDPDLCFRMQEGSEVYSN PCLEENKPGIVYASLNHNSVIGPNSRLARNVKEAPTEYASICVRS
<b>Quality Control Test</b>	12.5% SDS-PAGE Stained with Coomassie Blue.
<b>Storage</b>	Store at -80 centigrade. Aliquot to avoid repeated freezing and thawing.
<b>Storage Buffer</b>	50 mM Tris-HCl, 10 mM reduced Glutathione, pH=8.0 in the elution buffer.

 Tel: 1-631-559-9269    1-516-512-3133

 Email: [info@creative-biomart.com](mailto:info@creative-biomart.com)     Fax: 1-631-938-8127

 45-1 Ramsey Road, Shirley, NY 11967, USA

## GENE INFORMATION

**Gene Name** BTLA B and T lymphocyte associated [ Homo sapiens ]

**Official Symbol** BTLA

**Synonyms** BTLA; B and T lymphocyte associated; B- and T-lymphocyte attenuator; BTLA1; CD272; B and T lymphocyte attenuator; B- and T-lymphocyte-associated protein; FLJ16065; MGC129743;

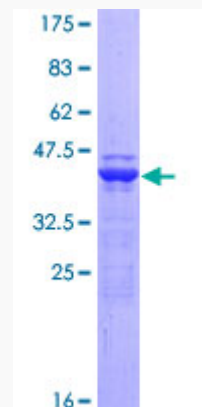
**Gene ID** 151888

**mRNA Refseq** NM\_001085357

**Protein Refseq** NP\_001078826

**MIM** 607925

**UniProt ID** Q7Z6A9



 Tel: 1-631-559-9269 1-516-512-3133

 Email: [info@creative-biomart.com](mailto:info@creative-biomart.com)  Fax: 1-631-938-8127

 45-1 Ramsey Road, Shirley, NY 11967, USA