

Recombinant Human BTLA protein, His-Avi-tagged

Cat. No. BTLA-518H Lot. No. (See product label)

SPECIFICATION

Product Overview	Recombinant Human BTLA Protein is expressed from mammalian with a His and Avi Tag at the C-terminal. It contains Met1-Ser150.
Species	Human
Source	HEK293
ProteinLength	It contains Met1-Ser150.
Description	B- and T-lymphocyte attenuator (BTLA; CD272) is a 35 kDa type I transmembrane glycoprotein in the CD28 family of T cell costimulatory molecules. BTLA is a inhibitory receptor on lymphocytes that negatively regulates antigen receptor signaling via PTPN6/SHP-1 and PTPN11/SHP-2 . BTLA may interact in cis (on the same cell) or in trans (on other cells) with TNFRSF14.
Form	Supplied as 0.22um filtered solution in PBS (pH 7.4).
Molecular Mass	The Protein has a calculated MW of 16.7kDa. As a result of glycosylation, the protein migrates to 35-45 kDa based on Bis-Tris PAGE.
Endotoxin	Less than 0.01EU per ug by the LAL method.
Purity	> 95% as determined by Bis-Tris PAGE
Storage	The product should be stored at -70°C. Please do not repeated freeze-thaw cycles.

 Tel: 1-631-559-9269 1-516-512-3133

 Email: info@creative-biomart.com  Fax: 1-631-938-8127

 45-1 Ramsey Road, Shirley, NY 11967, USA

Reconstitution It is recommended that sterile water be added to the vial to prepare a stock solution of 0.2 ug/ul. Centrifuge the vial at 4°C before opening to recover the entire contents.

GENE INFORMATION

Gene Name [BTLA B and T lymphocyte associated \[Homo sapiens \]](#)

Official Symbol [BTLA](#)

Synonyms CD272 antigen; CD272; B and T lymphocyte associated; B and T lymphocyte attenuator; B- and T-lymphocyte attenuator; B- and T-lymphocyte-associated protein; BTLA; BTLA1; FLJ16065; MGC129743

Gene ID [151888](#)

mRNA Refseq [NM_001085357](#)

Protein Refseq [NP_001078826](#)

MIM [607925](#)

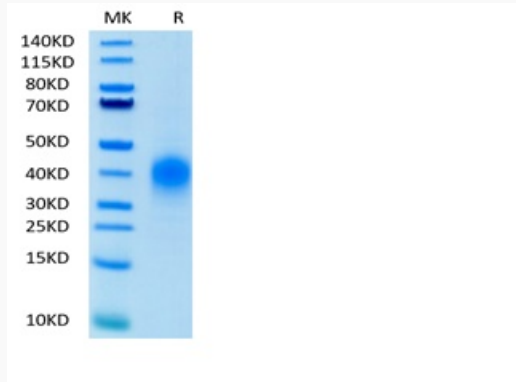
UniProt ID [Q7Z6A9](#)

 Tel: 1-631-559-9269 1-516-512-3133

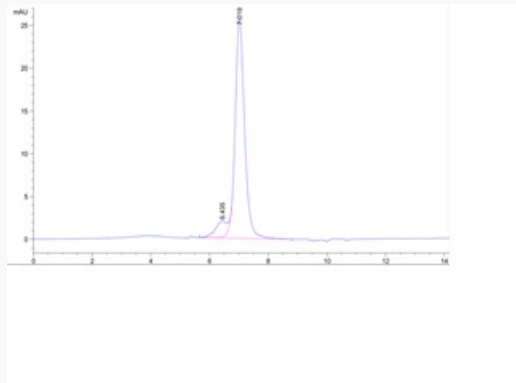
 Email: info@creative-biomart.com  Fax: 1-631-938-8127

 45-1 Ramsey Road, Shirley, NY 11967, USA

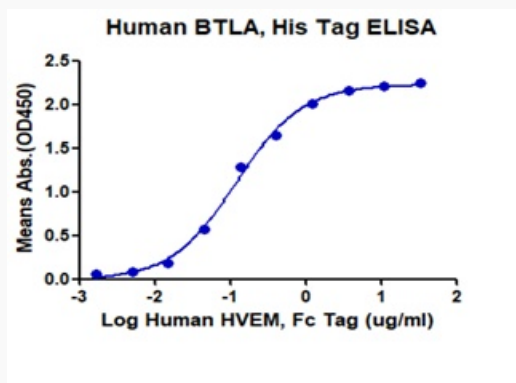
Tris-Bis PAGE



HPLC data



ELISA data



 Tel: 1-631-559-9269 1-516-512-3133

 Email: info@creative-biomart.com  Fax: 1-631-938-8127

 45-1 Ramsey Road, Shirley, NY 11967, USA