

Recombinant Human BTLA protein, His-Avi-tagged, Biotinylated

Cat. No. BTLA-568H **Lot. No.** (See product label)

SPECIFICATION

Product Overview	Biotinylated Recombinant Human BTLA protein(Q7Z6A9-1)(Lys31-Ser150), fused with C-terminal His and Avi tag, was expressed in HEK293.
Species	Human
Source	HEK293
ProteinLength	Lys31-Ser150
Tag	C-His-Avi
Conjugation/Label	Biotin
Form	Lyophilized from 0.22µm filtered solution in PBS (pH 7.4). Normally 5% trehalose is added as protectant before lyophilization.
Bio-activity	Immobilized Anti-BTLA Antibody, hFc Tag at 0.5ug/ml (100ul/well) on the plate. Dose response curve for Biotinylated Human BTLA, His Tag with the EC50 of 8.0ng/ml determined by ELISA.
Molecular Mass	The protein has a predicted MW of 16.7 kDa. Due to glycosylation, the protein migrates to 38-50 kDa based on Tris-Bis PAGE result.
Endotoxin	Less than 1EU per µg by the LAL method.

 Tel: 1-631-559-9269 1-516-512-3133

 Email: info@creative-biomart.com  Fax: 1-631-938-8127

 45-1 Ramsey Road, Shirley, NY 11967, USA

Purity	> 95% as determined by Tris-Bis PAGE;> 95% as determined by HPLC
Storage	Reconstituted protein stable at -80°C for 12 months, 4°C for 1 week. Use a manual defrost freezer and avoid repeated freeze-thaw cycles.
Reconstitution	Centrifuge tubes before opening. Reconstituting to a concentration more than 100 µg/ml is recommended. Dissolve the lyophilized protein in distilled water.
Conjugation	Biotin

GENE INFORMATION

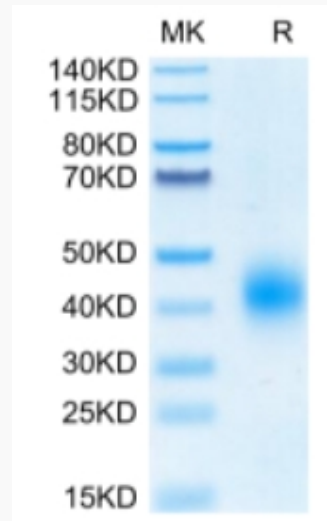
Gene Name	BTLA B and T lymphocyte associated [Homo sapiens]
Official Symbol	BTLA
Synonyms	BTLA; B and T lymphocyte associated; B- and T-lymphocyte attenuator; BTLA1; CD272; B and T lymphocyte attenuator; B- and T-lymphocyte-associated protein; FLJ16065; MGC129743;
Gene ID	151888
mRNA Refseq	NM_001085357
Protein Refseq	NP_001078826
MIM	607925
UniProt ID	Q7Z6A9

 Tel: 1-631-559-9269 1-516-512-3133

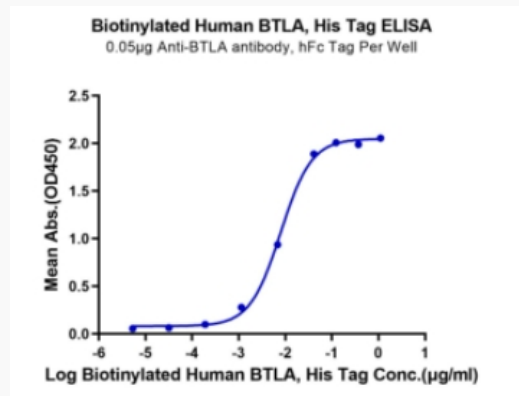
 Email: info@creative-biomart.com  Fax: 1-631-938-8127

 45-1 Ramsey Road, Shirley, NY 11967, USA

Tris-Bis PAGE



ELISA Data



 Tel: 1-631-559-9269 1-516-512-3133

 Email: info@creative-biomart.com  Fax: 1-631-938-8127

 45-1 Ramsey Road, Shirley, NY 11967, USA